



Putting Together the Jigsaw Puzzle

A case-study on collaborative grass-roots community-led and coordinated efforts driving recovery & resilience

- Kris Newton – Manager, Mountains Community Resource Network
- Vicki Edmunds – Recovery Manager, Blue Mountains City Council
- Anne Crestani – Manager, *Step by Step* Recovery Support Service
- Andrew Kaye – Community Engagement Coordinator, Blue Mountains RFS
- Jo Davies – Community Development, Blackheath Area Neighbourhood Centre
- Esther Perry – Communications & Community Engagement Officer, NBMPHN



Australian Government

Australian Institute for
Disaster Resilience



#ADRC21



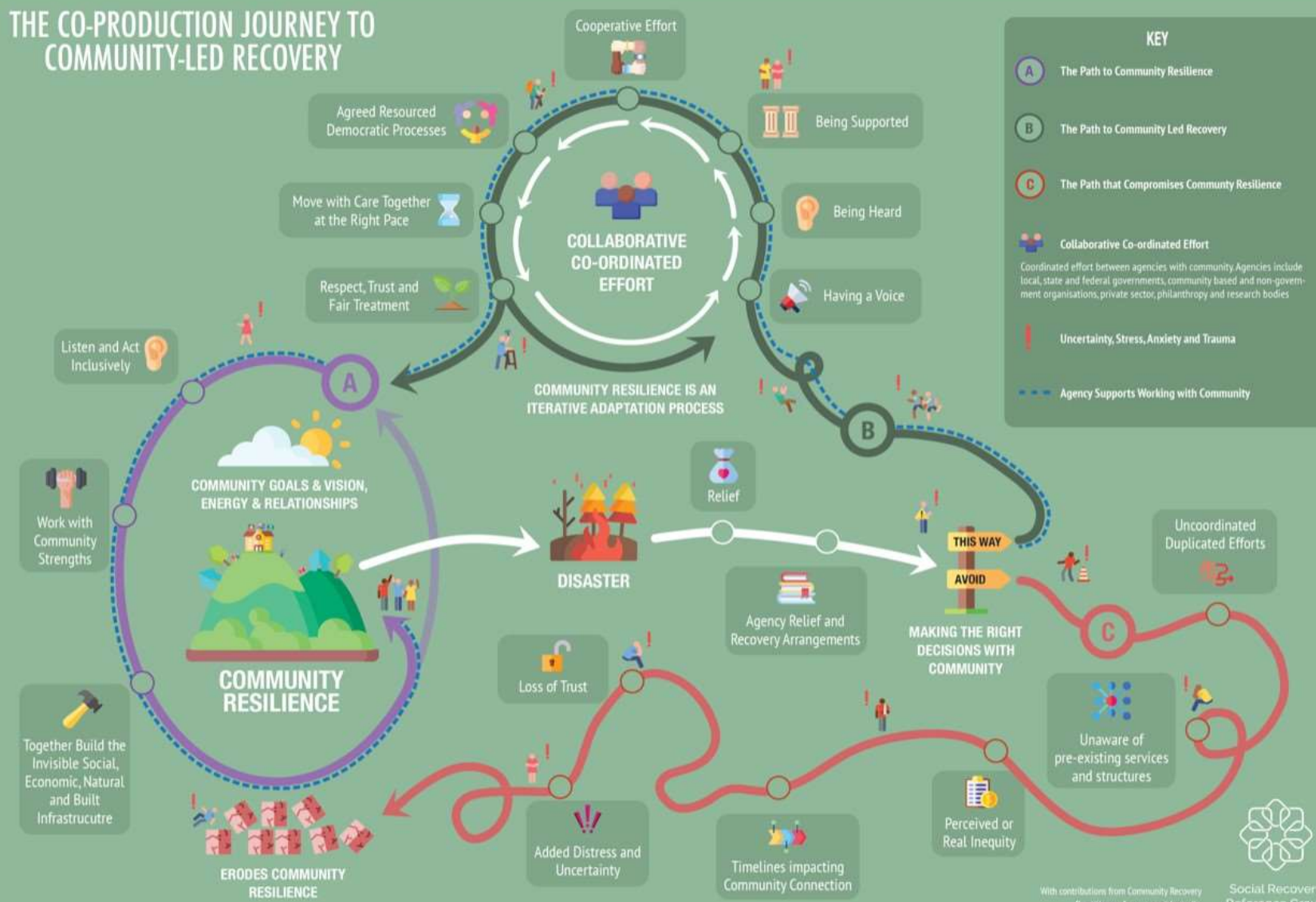
Photos by Unknown Author are licensed under [CC BY-SA](#)



Resilience
NSW



THE CO-PRODUCTION JOURNEY TO COMMUNITY-LED RECOVERY



With contributions from Community Recovery Practitioners from around Australia. Graphics by ThinkPlace





Australian Government

Australian Institute for
Disaster Resilience



#ADRC21

Recovery

Resilience

Preparedness



Resilience
NSW





Australian Government

Australian Institute for
Disaster Resilience



#ADRC21



Resilience
NSW