



From Risk to Resilience Summit

Wednesday 29 – Thursday 30 June 2022





From Risk to Resilience Summit

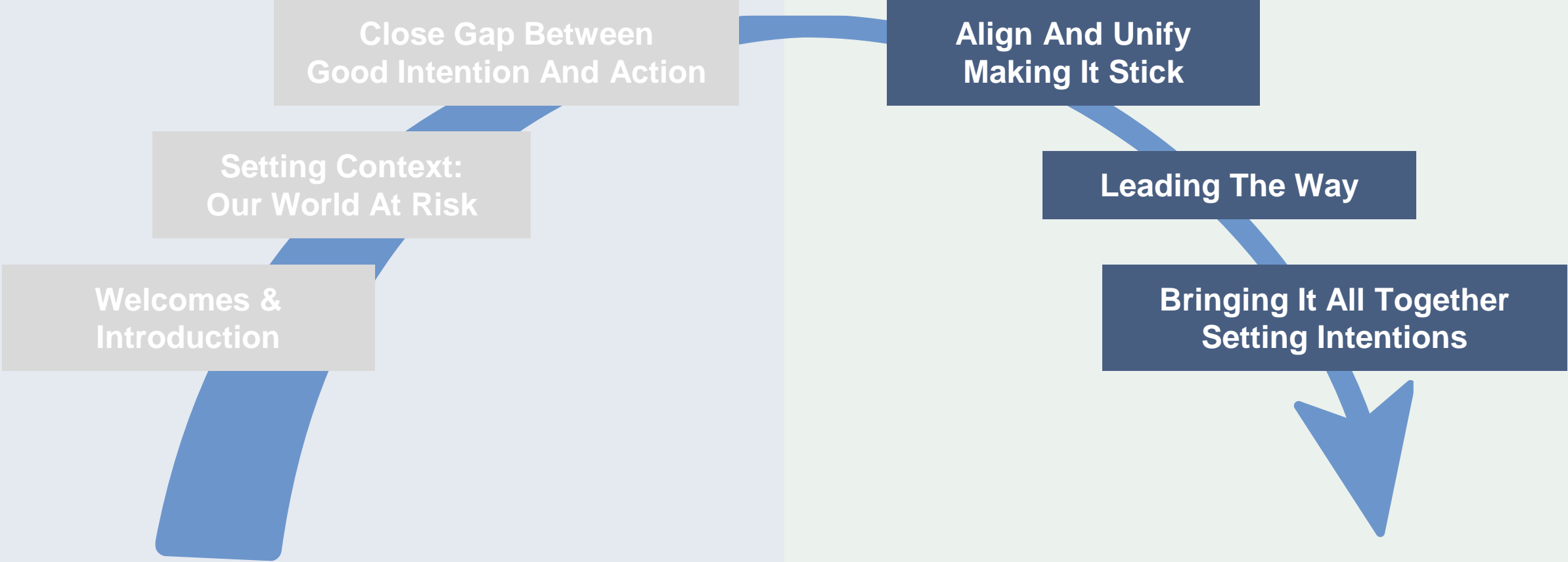


Welcome back – Day Two

Dr Mark Crossweller AFSM

Founder and Director, Ethical Intelligence

Wrap up – Day One



DAY ONE

DAY TWO



From Risk to Resilience Summit



Graphic Recording

Dayna Hayman

Freelance Graphic Recording



Session Three

Aligning and unifying efforts - making it stick





From Risk to Resilience Summit



The discussion we desperately need to have

Tyson Yunkaporta

Senior Lecturer Indigenous Knowledges,
Deakin University

Author of Sand Talk: How Indigenous
Thinking Can Save the World

www.slido.com

#RiskToResilience





From Risk to Resilience Summit



‘What will you do to incorporate First Nations thinking and knowledge in your organisation’s Culture and governance?’



From Risk to Resilience Summit



Earth-centred governance: the ideas that lie beneath

Dr. Michelle Maloney

Co-Founder and National Convenor,
Australian Earth Laws Alliance

www.slido.com

#RiskToResilience



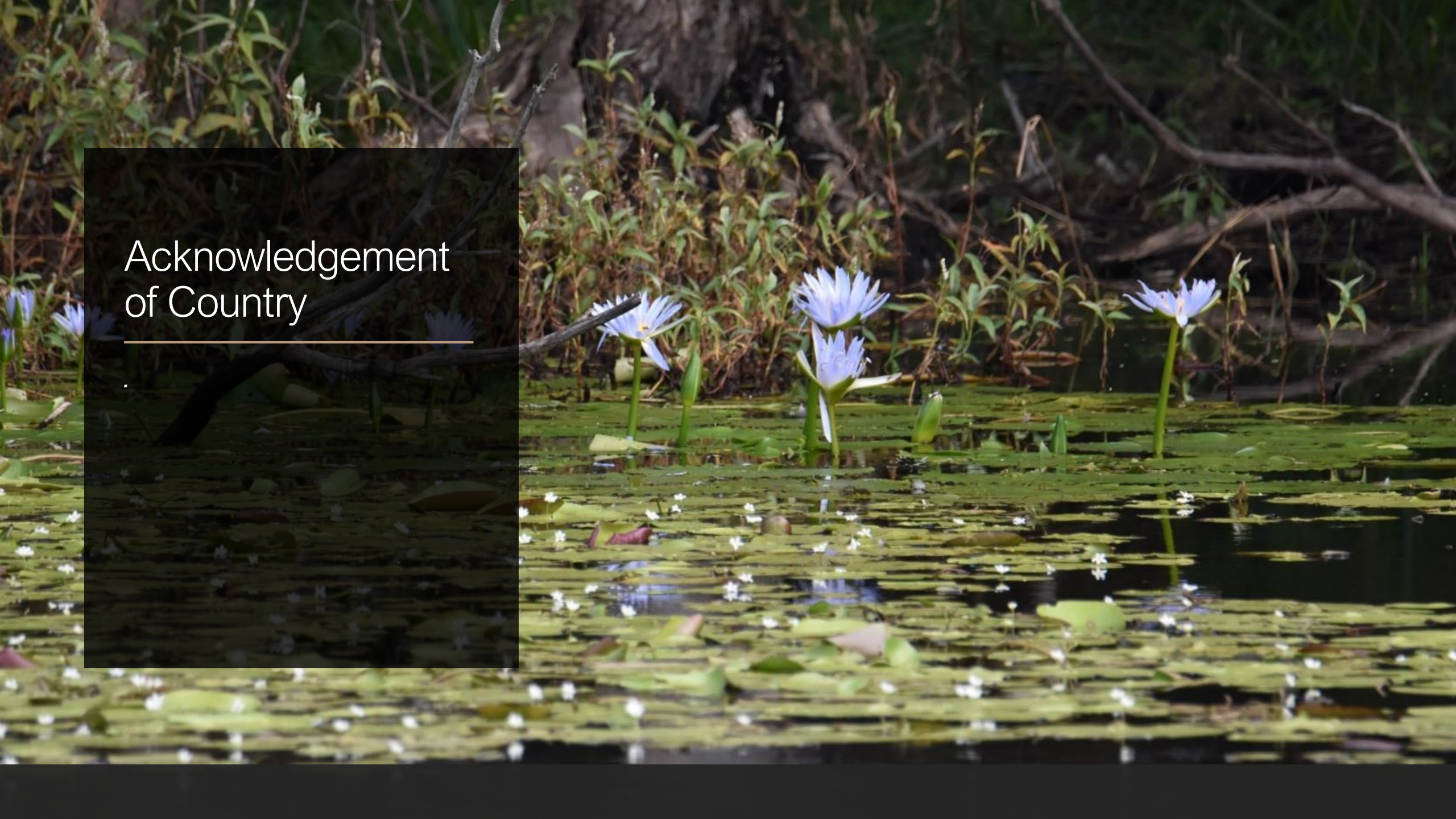
Earth centred governance – the ideas that lie beneath

Dr Michelle Maloney
Australian Earth Laws Alliance

www.earthlaws.org.au



Acknowledgement of Country





An Earth centred perspective

- ❖ **What we face**
- ❖ **What we must do now**
- ❖ **How do we do it?**

Selected “Draft actions for discussion at Summit”

Embed Caring for Country as a first principle

Invest in PLACE BASED case studies and bottom up processes that connect through different levels

Build competencies, capability, capacity for youth

Formalise/mandate wider range of VALUES in governance, decision making and investment processes

Shift narratives away from ‘risk’ headline to those that enable people to find pathways to a future where they flourish

What we face

Our changing world

Climate Change

Biodiversity loss

Degraded ecosystems

Loss of 'the wild'

Shortage of important stuff
people need: food, water



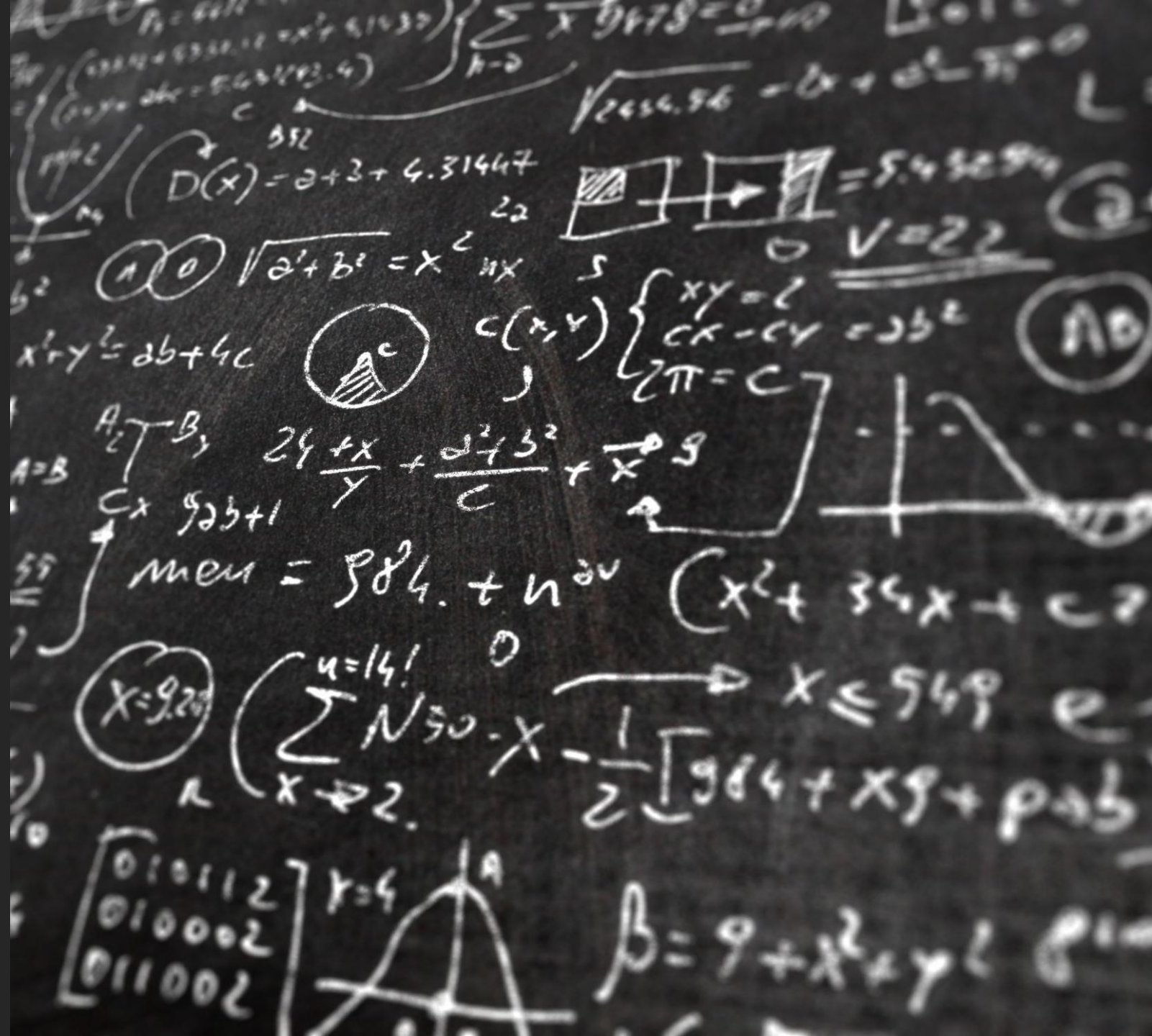


Beneath these
symptoms –
the cause?

OUR FAILURE TO MANAGE
OUR RELATIONSHIP WITH
THE LIVING WORLD

What we must
do now

“We can not solve our problems with the same level of thinking that created them.” – Albert Einstein



What we must do now

Challenge our mindset, to inform our actions

Challenge modern industrialised societies' culture

- ❖ Human-centred
- ❖ Extractivist – material growth oriented
- ❖ Expansionist – “if we run out, we can get more”



Challenge human-centredness

Understand our place
in the wider Earth
community

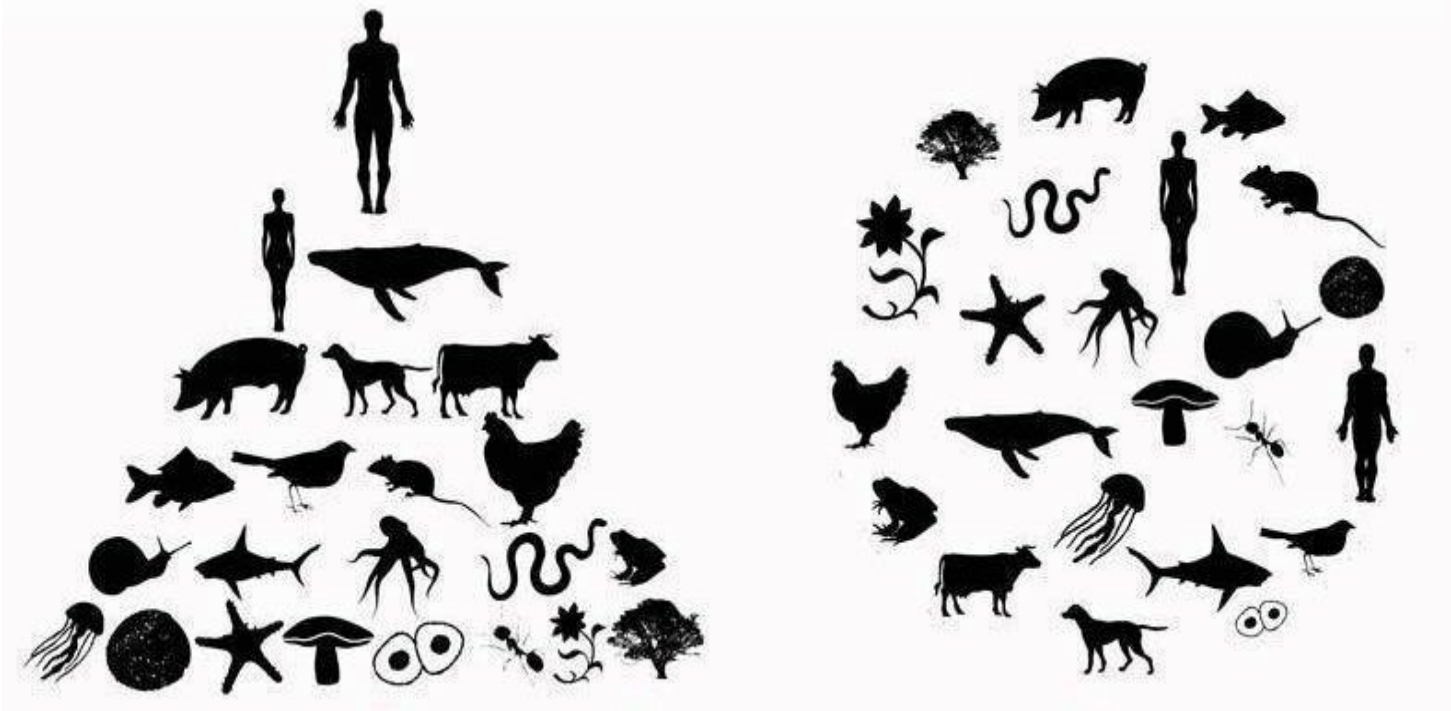
DEEP TIME – HOLD YOUR
BREATH

WE ARE JUST ONE PART
OF THE EARTH
COMMUNITY

LIFE IS PRIMARY



Earth jurisprudence calls for us to shift all our **governance systems** to be ecocentric, and to nurture the Earth community. – Earth centred systems change.



Human centred

Earth centred

Challenge extractivism

BUILD A REGENERATIVE
WAY OF UNDERSTANDING,
THINKING, FEELING,
DOING



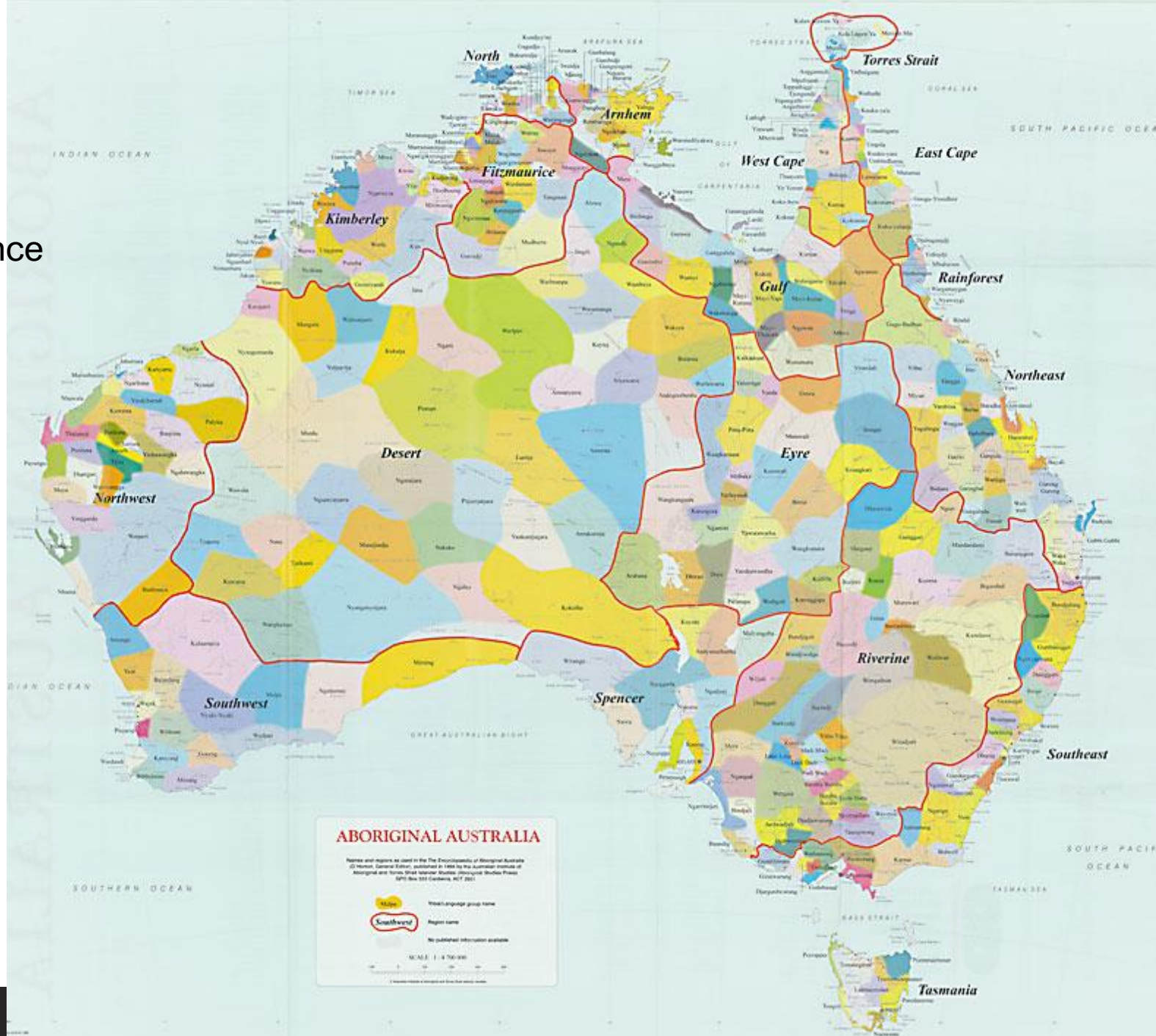
Challenge expansionism



BRITISH EMPIRE

World's most successful governance model

Bioregional
Steady-state
society



How do we do it?

Critique of current governance – we ask too much from the living world

Law and Government

- Legal system is supporting exploitation rather than protecting the natural world from destruction

Economics - neoliberal growth economics;

Universities/education – perpetuate current system, lack of critical thinking

Draft actions for discussion at Summit

Embed Caring for Country as a first principle

Invest in place-based case studies and bottom up processes that connect through different levels

Build competencies, capability, capacity for youth

Formalise/mandate wider range of VALUES in governance, decision making and investment processes

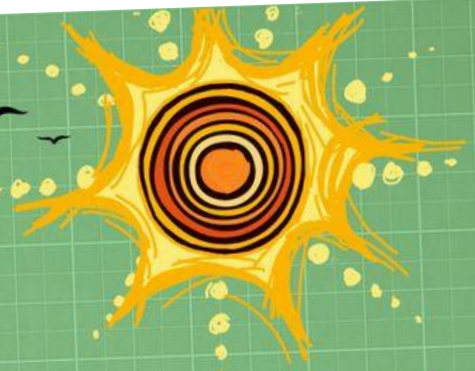
Shift narratives away from 'risk' headline to those that enable people to find pathways to a future where they flourish

Greenprints

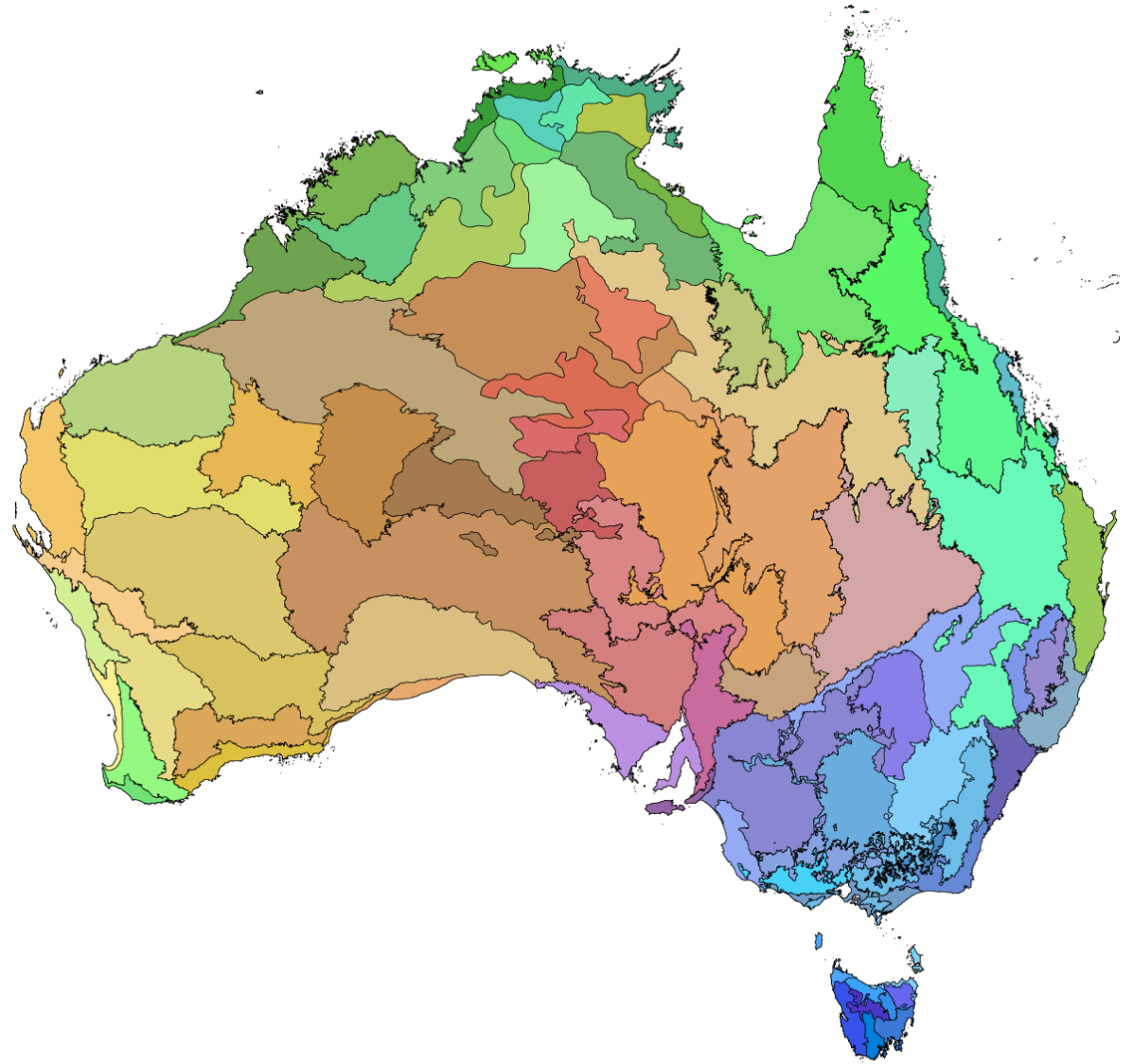
Civil society ('bottom up')
Place based
Steady state
Regenerative
Local capacity, local governance



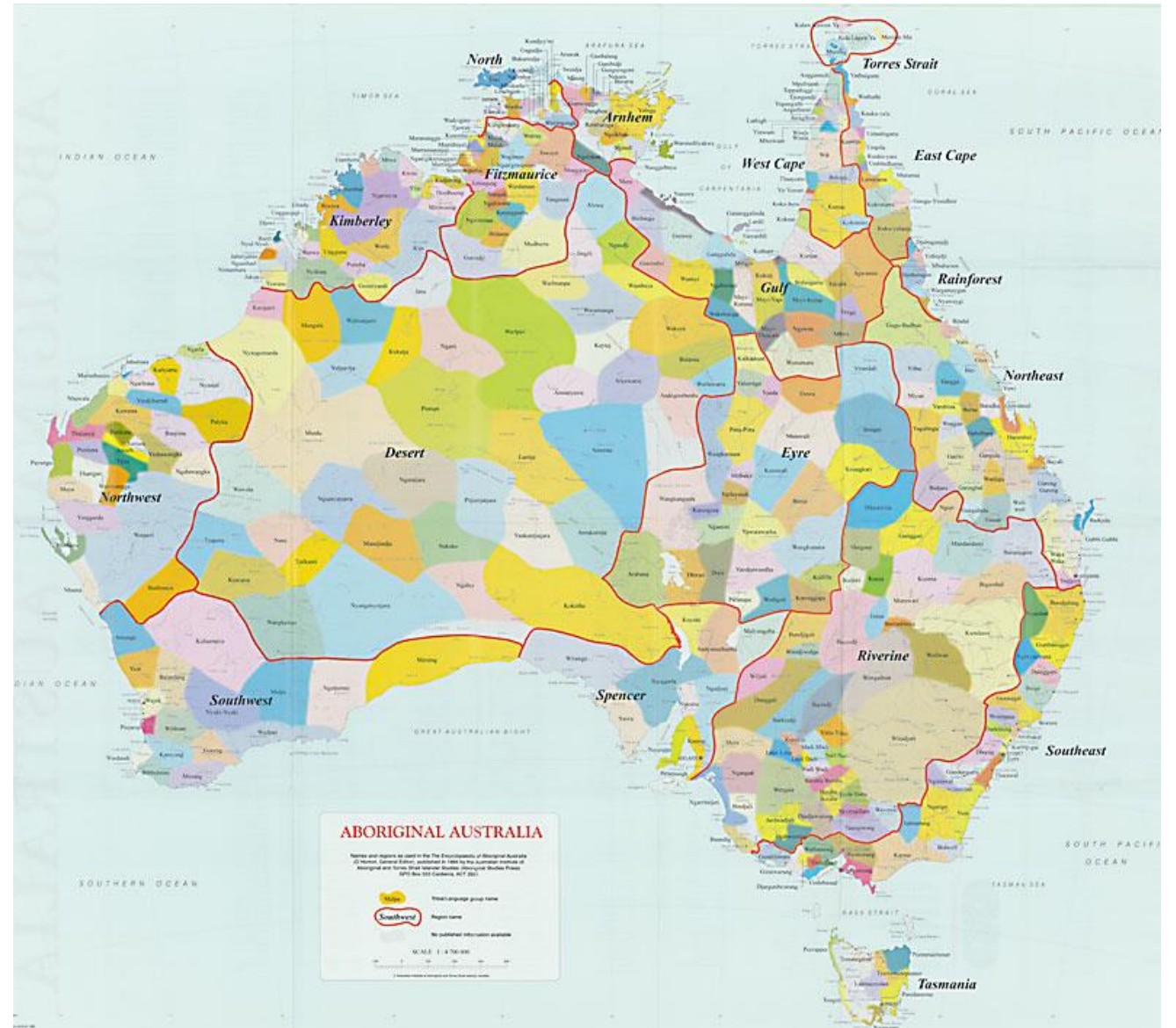
greenprints.org.au



Vision – healthy
bioregions,
catchments,
people and
biodiversity



Vision – healthy Country and healthy communities



The Greenprints Steps



1. Think differently

2. Define ecological boundaries

3. Understand ecological foundations

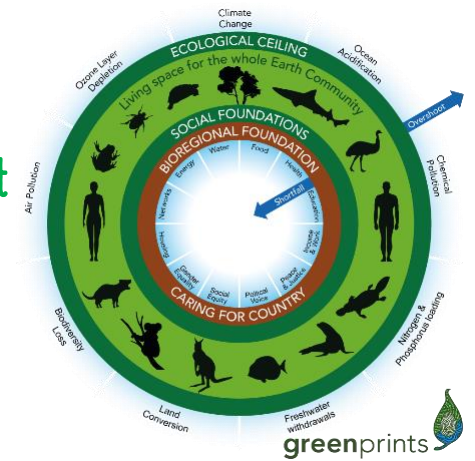
4. Understand human activities, past and present

5. Health check: are we in overshoot?

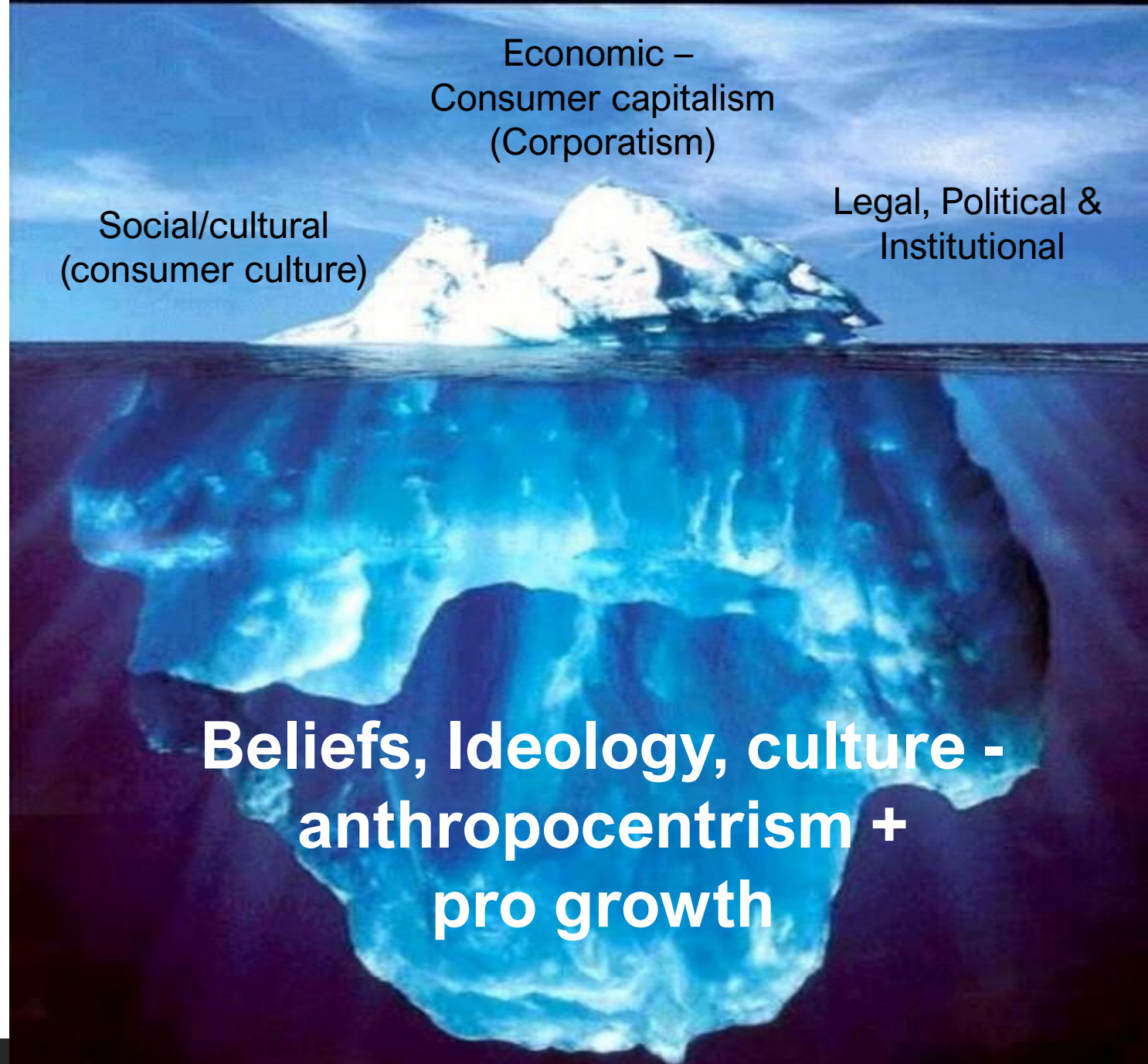
6. Develop scenarios for change

7. Collective decision-making processes

8. Develop transition action plans and start to implement
(loop back to Step 4 and keep going!)



Earth
jurisprudence
helps us
challenge the
ideas that lie
beneath the
destructive
capacity of
industrial
societies



Thank you!

aela@earthlaws.org.au

www.earthlaws.org.au



Mark Berkery



From Risk to Resilience Summit



‘What can you do to better align social justice, nature-based solutions, and risk reduction’



From Risk to Resilience Summit



Morning Tea

10.30 am – 11 am

Next: Panel provocation and discussion



From Risk to Resilience Summit



Panel provocation and discussion

Linda Scott

President, Australian Local Government Association

Nina Keath

Senior Strategic Planner, City of Onkaparinga

John Richardson

National Resilience Advisor, Australian Red Cross

www.slido.com

#RiskToResilience



Where We Are Now:



The emerging action we have discussed:

Invest in place-based case studies & bottom up processes that connect through different levels.

The emerging action we are now discussing:

Invest in people & process, not only products & 'things'.
E.g. Co-design processes, networks and co-ordinating bodies to catalyse collaboration and change.

Invest in place-based case studies & bottom-up processes that connect through different levels

Invest in people & process, not only products & 'things' e.g., co-design processes, networks and co-ordinating bodies to catalyse collaboration and change

1. Individually consider the most concrete actions on HOW to do this 'better' or 'differently', and why you think it's on that pathway.
2. Enter your reflection into Slido.

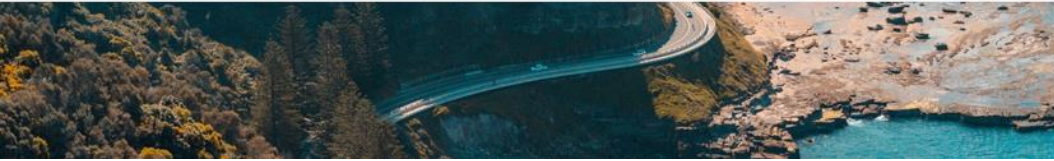
Investment is needed in multiple areas and across all domains – social, environmental and economic: nature based and innovative solutions, social infrastructure needs of communities, built infrastructure, financial infrastructure, supply chain risk/major transportation corridors and routes and research on how to build social resilience.

What are the criteria for prioritising?

1. In your table groups explore the criteria required to prioritise funding for investing in more resilience outcomes. What criteria could be used to achieve collective alignment on large scale infrastructure funding? What should government prioritise?
2. LIST your criteria. You don't need to all agree or prioritise, just put ideas forward, test them, listen, build on At your table using the pens and paper provided.



From Risk to Resilience Summit



Lunch

12.30 pm – 1.30 pm

The 'Regenerating Australia' movie will be screened in the main Plenary

Next: Session Four – Leading the way



From Risk to Resilience Summit



Graphic Recording

Dayna Hayman

Freelance Graphic Recording



Session Four

Leading the way





From Risk to Resilience Summit



Interpreting the world: creativity in dealing with disasters

Dr. Jen Rae

Researcher, Facilitator, Educator

www.slido.com

#RiskToResilience



Interpreting the world: creativity in dealing with disasters

Dr Jen Rae

From Risk to Resilience Summit
Australia's Call to Action

PORTAGE: FLOTILLA (detail, 2019)

Jen Rae

RAFT building workshops with Giant Grass, weaving workshops and immersive installation

Sound- Marco Cher-Gibard

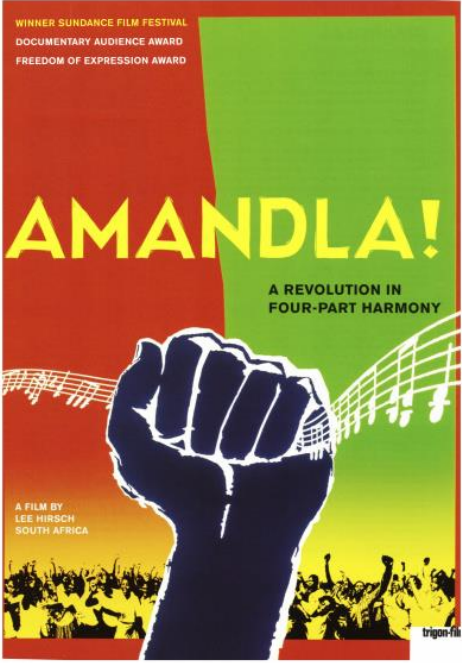
For REFUGE: Displacement at Arts House

Photo: Bryony Jackson

How can arts and culture help interpret a turbulent and complex world?



A Fable for Tomorrow – opening of Rachel Carson's *Silent Spring*



AMANDLA! Documentary on the Freedom Songs of the movement to end apartheid



GAP FILLER, *Palette Pavilion* (2012-14) after the Christchurch earthquake

Environmental disaster
of pesticide use (DDT)

Apartheid
institutionalized
racial
oppression

Christchurch earthquake
(2011)

Intersections of art, climate and disaster resilience – International and Australia



SCALE
Le SAUT

SCALE is a “network of networks” of artists and organizations working at the intersection of culture and climate in Canada. Formed in 2021, our mandate is to foster a coordinated, artful and impactful response to the climate emergency from Canada’s arts and culture sector.

Julie’s Bicycle

CREATIVE • CLIMATE • ACTION

Creative Climate Leadership (CCL) is an international training and transformation programme to empower artists and cultural professionals to take action on the climate and ecological crisis with impact, creativity, and resilience. Our alumni join an evolving international network of creatives taking action and mobilising others in their field, through events, workshops, artistic works, and projects.



**CREATIVE
RECOVERY NETWORK**

CRN are the lead agency building national recovery capability, linking the creative sector with communities and disaster management, helping people grow and connect through the disaster experience.

CANADA

UK

AUSTRALIA

CASE STUDY: REFUGE (2016 – present)



REFUGE: Pandemic (2018)

Photo: Emma Byrnes



Jen Rae, *Apitherapy Quarantine: Zone II (Containment Chamber)*

REFUGE: Pandemic (2018)

This is **not** a drill
This is **not** a model

PLAYING IN THE DARK
Dramaturgical methodology

FOOD

Food Store
مخزن الطعام
食品店

accessibility



HEAT

WAYFINDING



Safety

REHEARSING CLIMATE-RELATED DISASTERS

What are we practicing?

What risks are we taking?

What are we preparing for?

Responding to?

Recovering from?

Self-reliance

**HEALTH +
Well being**

Photos: Bryony Jackson + James Henry
©Arts House



EMPATHY

ENERGY





DISASTERS ARE A TERRIBLE TIME TO LEARN NEW SKILLS



PORTAGE: RAFT, FLOTILLA + SHELTER2CAMP (2019-2021)

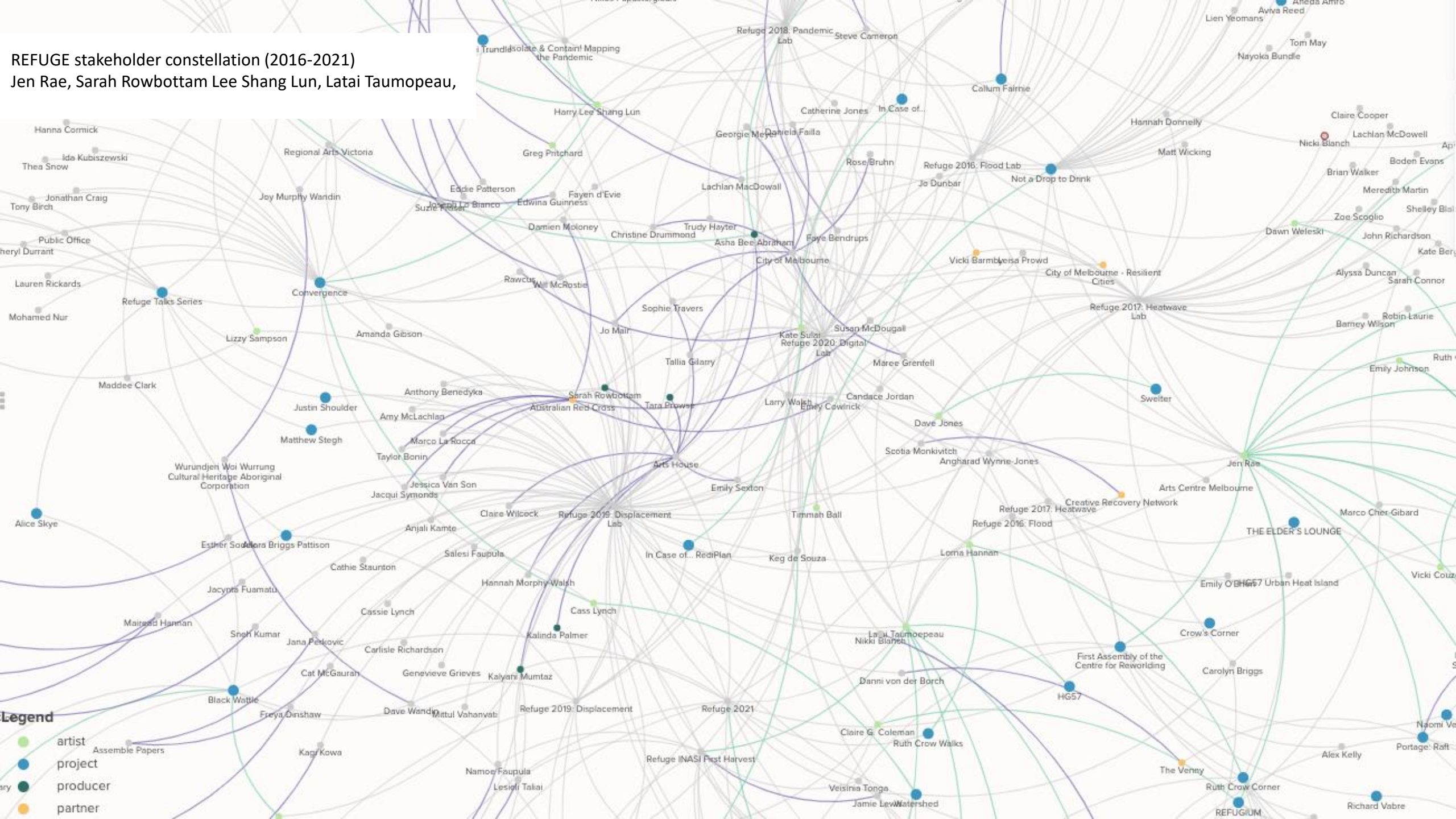
Jen Rae

In collaboration with Giant Grass (RAFT, 2019) and Aunties Dr Vicki Couzens, Bronwyn Razem, Vicki Kinai, Muhubo Sulieman

Photos: Bryony Jackson and Emma Byrnes

REFUGE stakeholder constellation (2016-2021)

Jen Rae, Sarah Rowbottom Lee Shang Lun, Latai Taumoepeau,



Legend

- artist
- project
- producer
- partner

CREATIVE RESILIENCE LAB

Jen-Rae + Maree Grenfell

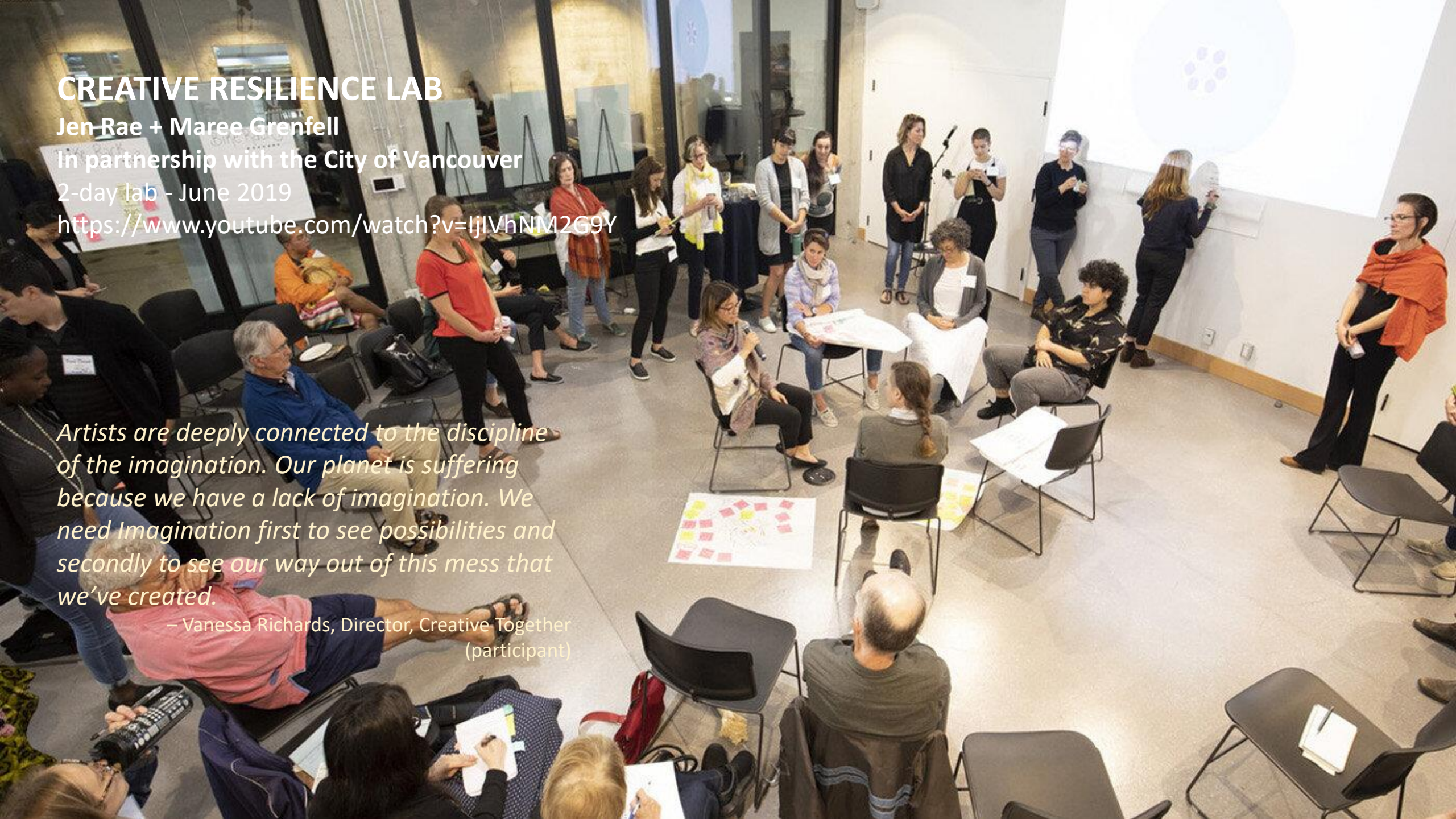
In partnership with the City of Vancouver

2-day lab - June 2019

<https://www.youtube.com/watch?v=IjIVhNM2G9Y>

Artists are deeply connected to the discipline of the imagination. Our planet is suffering because we have a lack of imagination. We need Imagination first to see possibilities and secondly to see our way out of this mess that we've created.

– Vanessa Richards, Director, Creative Together
(participant)



CITY OF MELBOURNE

Emergency Exercise Torrent— Flood recovery North Melbourne

17 June 2022

Co-designed and co-facilitated with artists
Jen Rae, Kate Sulan and Jonathan Craig

*The biggest challenge in engaging communities in disaster preparedness is the balance of community understanding what they, the community can do themselves in advance of an emergency (rather than when it actually happens) and how emergency services and councils can **work with them** to achieve this.*

We chose to work with Arts House and REFUGE artists in the design and delivery in this year's emergency exercise with a focus on engaging with the North Melbourne Community around the theme of flood recovery.

Christine Drummond
CoM Emergency Management Coordinator



Exercise
focus areas
INCLUSION
COMMUNICATION
VOLUNTEERISM (spontaneous + organised)

Priorities for the National Action Plan – *Leading the Way* – the role of arts and culture

From the Centre for Reworlding

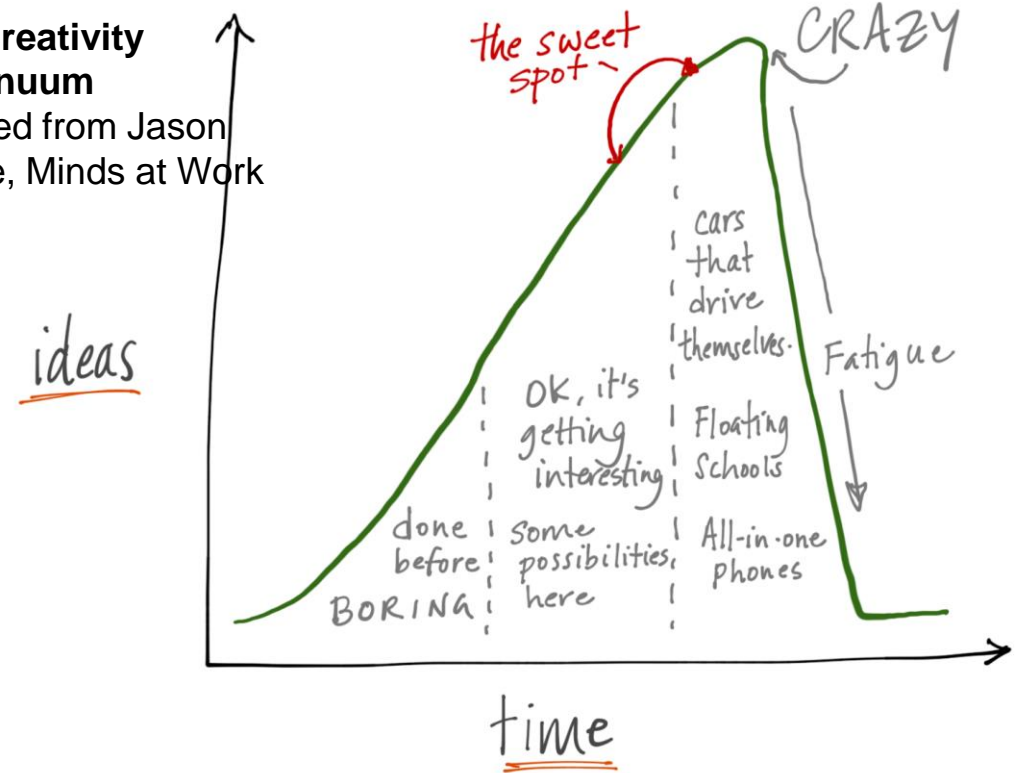
CREATIVE CLIMATE LEADERSHIP

(1) Prioritising the **mainstream integration** of arts and culture in national climate emergency discourses, policy frameworks and tertiary education with funding to support the expertise and mentorship of artists, designers and cultural producers.

CULTURAL CONSTELLATIONS

(2) Prioritise the **representation with remuneration** of First Peoples, CALD, youth and LGBTIQ+ peoples at all levels of authority and decision-making in climate change adaptation, disaster preparedness and resilience.

The Creativity Continuum
adapted from Jason Clarke, Minds at Work



Thank you Q&A

CONTACT

Dr Jen Rae

Centre for Reworlding

hello@centreforreworlding.com

www.jenraeis.com

M: 0406 511 707

Research Fellow, RMIT University, School of Design & Social Context

Jen.rae2@rmit.edu.au

More on REFUGE visit

<https://www.artshouse.com.au/artist-opportunities/refuge/>

Jen Rae + collaborators

Apitherapy Quarantine (Zone III)

REFUGE: Pandemic (2018)

Photo: Emma Byrnes



Ready, Steady, Go – detail (2020)
Emma Byrnes + Jen Rae



From Risk to Resilience Summit



‘How will you build the creative skills necessary for the health and wellbeing of a current and future workforce?’



From Risk to Resilience Summit



What would it look like to lead a priority in the Second National Action Plan?

Anjali Sharma

Student, Climate Activist

www.slido.com

#RiskToResilience



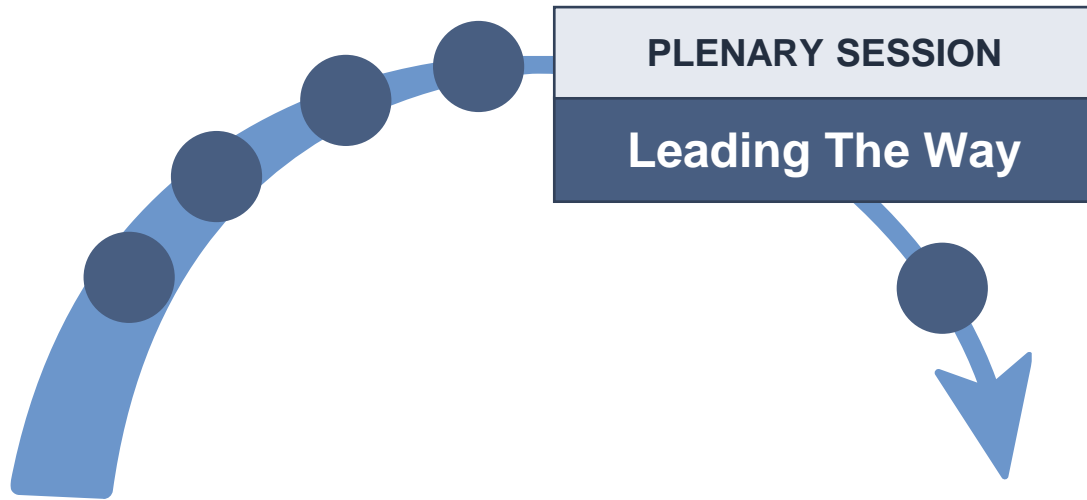


From Risk to Resilience Summit



'How are you preparing yourself and others to lead in these uncertain times?'

Where We Are Now:



The emerging action we have discussed:

Invest in people & process, not only products & 'things'.
E.g. Co-design processes, networks and co-ordinating bodies to catalyse collaboration and change.

The emerging action we will now discuss:

Develop, promote and reward different ways of leading across the system, (re)build trust in institutions.

In your table groups, explore potential future leadership initiatives

Think about:

1. What characteristics, competencies and behaviours to reward or penalise?
2. DRAW the elements using keywords to explain.

Again, you don't all need to agree, just put ideas forward, test them, listen and build on them.

Individually consider what you heard at your table and plenary and type your own answer into Slido to the following questions:

1. What is the most important thing you would do without funding?
2. What is the most important thing you would fund?



From Risk to Resilience Summit

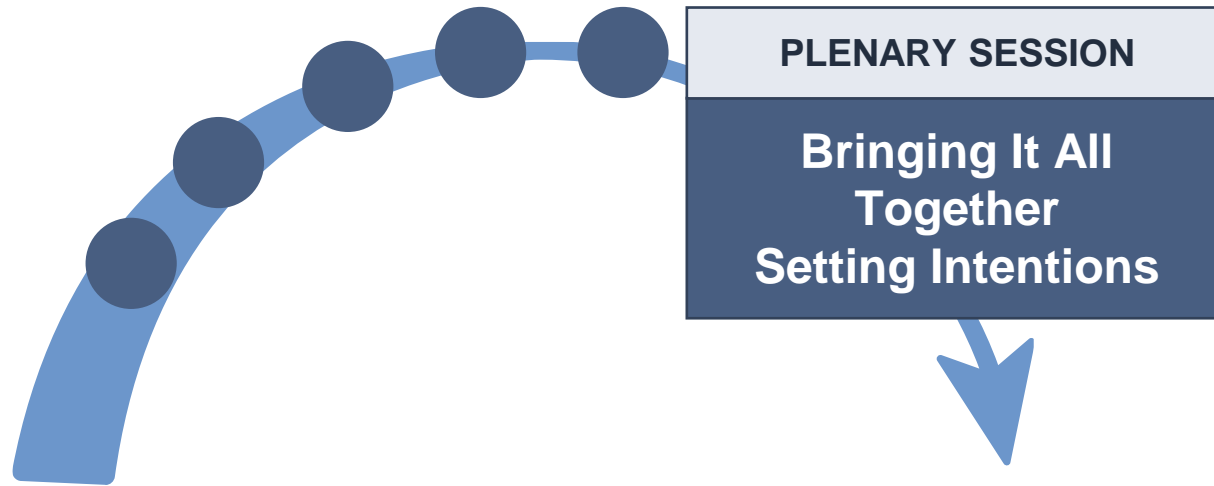


Afternoon Tea

3.30 pm – 4 pm

Next: Bringing it all together – A National Action Plan

Where We Are Now:



We've now discussed all of the emerging actions except for:
Build outcomes frameworks, embed learning culture, and implement Monitoring Evaluation and Learning to accelerate taking effective action.

Emerging Actions Developed Across The Deep Dives

Address root cause of disaster risk, levers for system change

SPECIFIC ACTIONS FOR SYSTEMIC CHANGE

Embed 'Caring for Country' as a first principle.

Invest in place-based case studies & bottom-up processes that connect through different levels.

Build competencies, capability, capacity for youth (and more broadly) to act for their future.

Address mental health by through anticipatory learning, agency & action.

Formalise/mandate wider range of values in governance, decision-making and investment processes.

Develop ways to measure and assess non-financial values.

Invest in and incentivise innovation and action of all stakeholders to reduce liabilities and the creation or transfer of risks, including levers and legal accountability in land-use planning and decision-making and governance.

ENABLING / FOUNDATIONAL ACTIONS

Shift narratives away from 'risk' headline, to those that enable people to find pathways to a future where they flourish despite uncertainty and continual disruption.

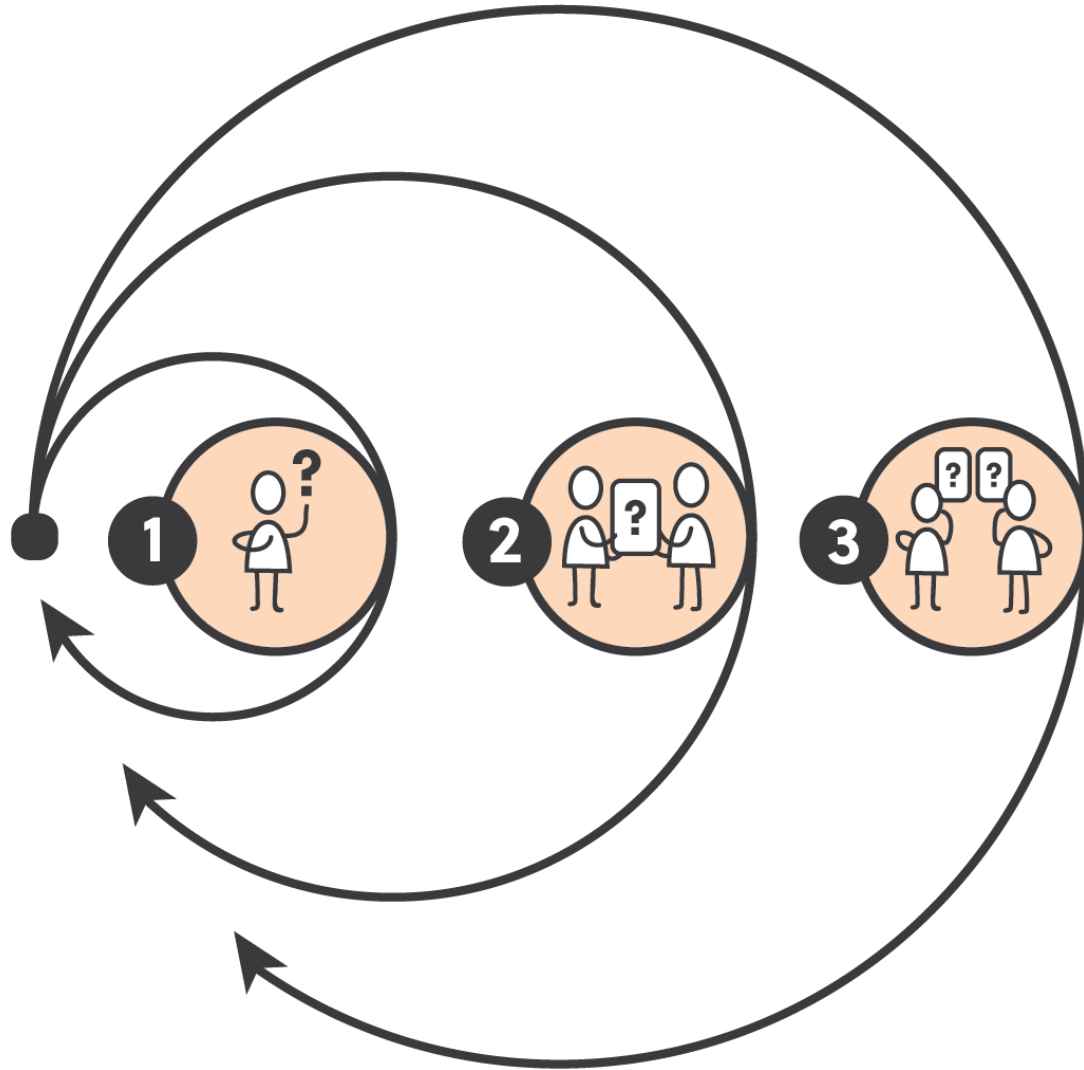
Invest in people & process, not only products & 'things' e.g. co-design processes, networks and co-ordinating bodies to catalyse collaboration and change.

Develop, promote and reward different ways of leading across the system, (re)build trust in institutions.

EMBEDED MEL

Build outcomes frameworks, embed learning culture, and implement effective Monitoring, Evaluation and Learning to accelerate taking effective action.

MULTI-LOOP LEARNING



- 1** Are we doing things right?
- 2** Are we doing the right things?
- 3** How do we decide what is right?

Think about one thing you've learned.
Write it down.



From Risk to Resilience Summit



Summit Wrap up

We have asked you so many questions! Have you got any for us?

Write a question you may have for us on a card before you leave for us to collect.



From Risk to Resilience Summit

Wednesday 29 – Thursday 30 June 2022

