

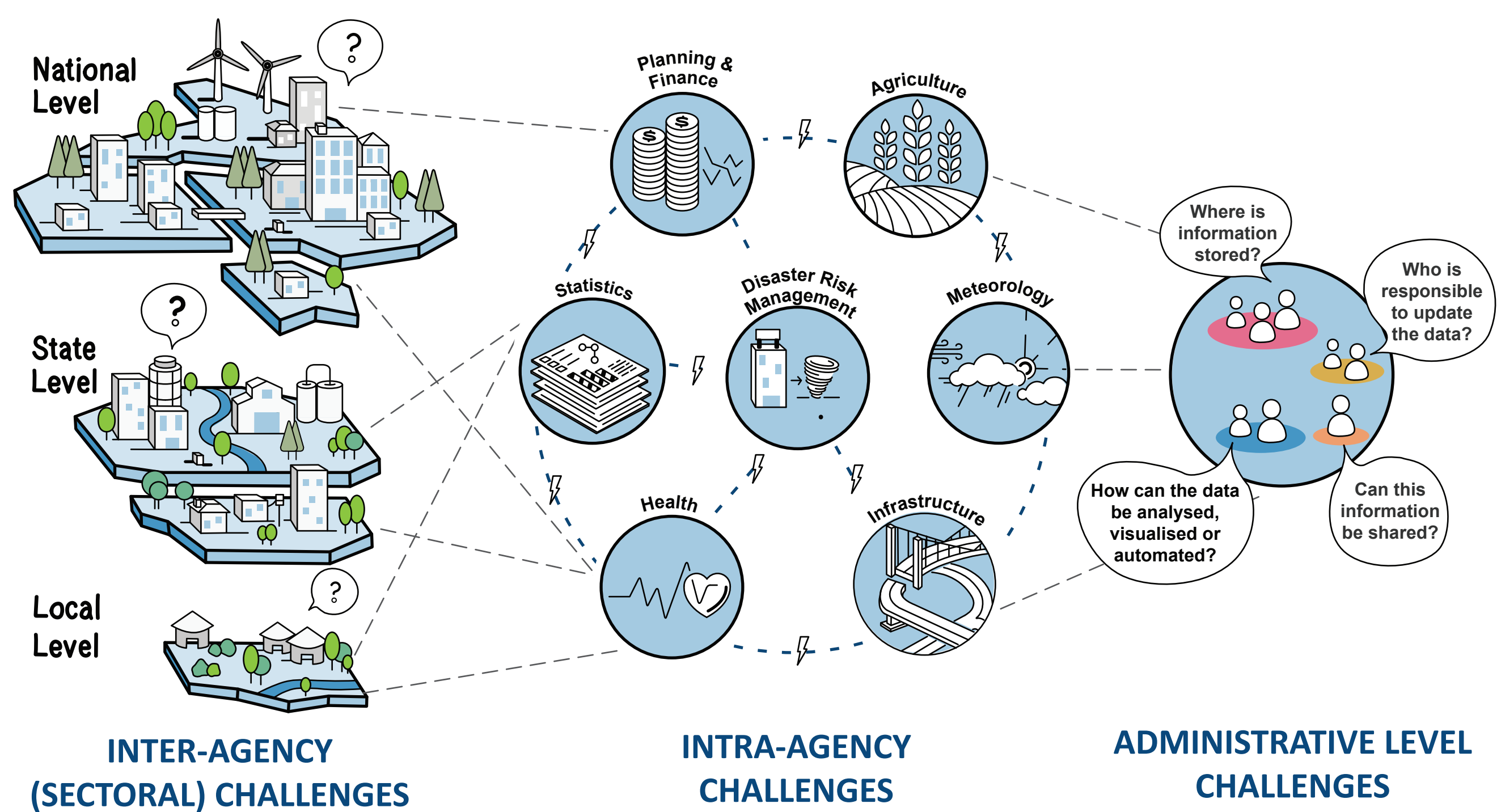
# Information Governance for Disaster Risk Reduction

## 1 Information for decision making is a challenge

Not having the right information at the right time in the right format prevents us from making the best decisions. This is particularly relevant in the current pandemic context with various stakeholders involved.

Reasons for Common Information Issues are:

- Political Barriers
- Missing Collaboration
- Disconnected Tools
- Unplanned or Weak Processes
- Poor Access, Updates, Sharing
- Limited Capacities



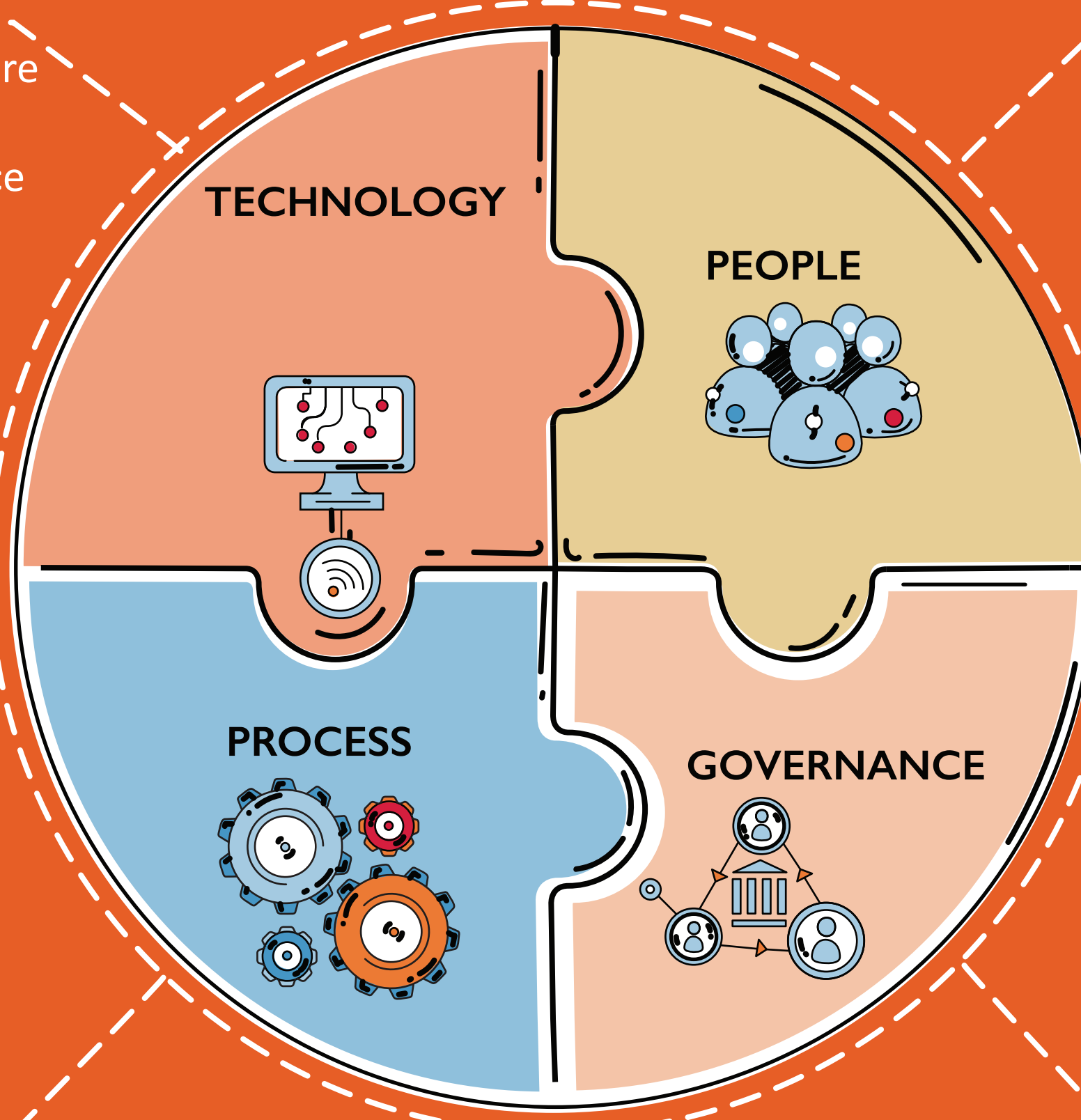
All four IG components are vital to  
establish good practice.

Information Architecture  
Hardware & Software  
Security & Maintenance

Roles and Responsibilities  
Capacity and Capability  
Professional Development

Business needs and  
Quality  
Discovery & Access  
Procedures, Training &  
Support

Leadership Support  
Strategy, Policies and  
Alignment  
Compliance, Monitoring  
and Evaluation



## 2 Information Governance (IG) is a critical enabler

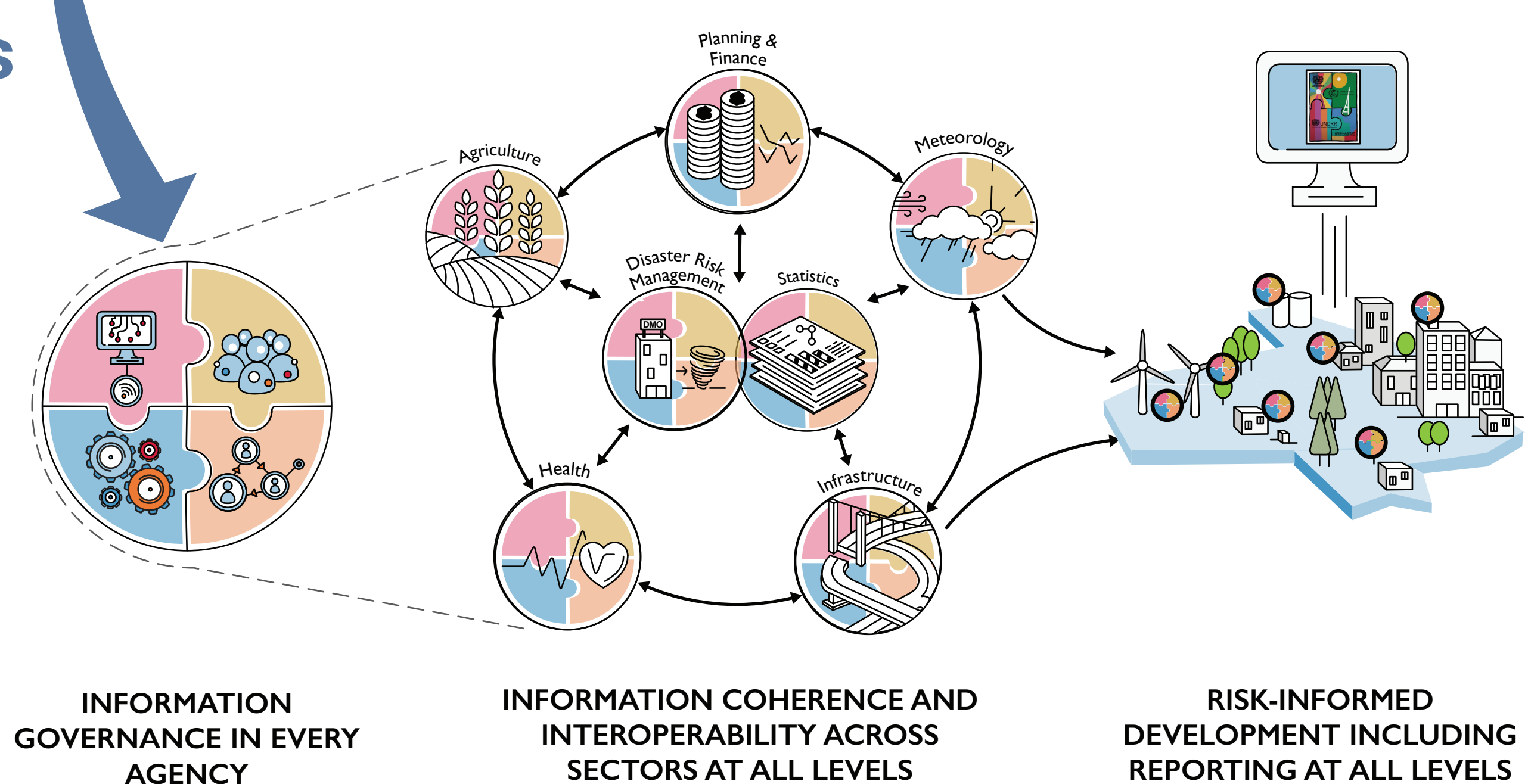
- IG is the organisational structures and frameworks to institutionalise and operationalise information as an asset.
- IG is a part of organisational governance, and a scalable opportunity to address complex information challenges.
- IG promotes appropriate resources and accountability to establish good practice for disaster information.

## 3 Good IG strengthens risk-informed development

IG can mobilise synergies and reliable information. IG helps transforming digital information assets into operational knowledge.

Effective information is

- Jointly Planned
- Structured and Standardised
- Produced Once and Reused Many Times
- Managed / Curated
- Accessible in Time



This publication has been developed based on stakeholder consultations and research within the Global Initiative on Disaster Risk Management (GIDRM), an initiative commissioned by the German Federal Ministry for Economic Cooperation and Development (BMZ) and implemented by the Deutsche Gesellschaft für Internationale Zusammenarbeit (GIZ) GmbH. Prepared by Jutta May | Contact [jutta.may@gmx.net](mailto:jutta.may@gmx.net). Visualisation by ThinkPlace | [www.thinkplaceglobal.com](http://www.thinkplaceglobal.com)

Implemented by

**giz** Deutsche Gesellschaft  
für Internationale  
Zusammenarbeit (GIZ) GmbH

**GI:DRM**  
Global Initiative on  
Disaster Risk Management