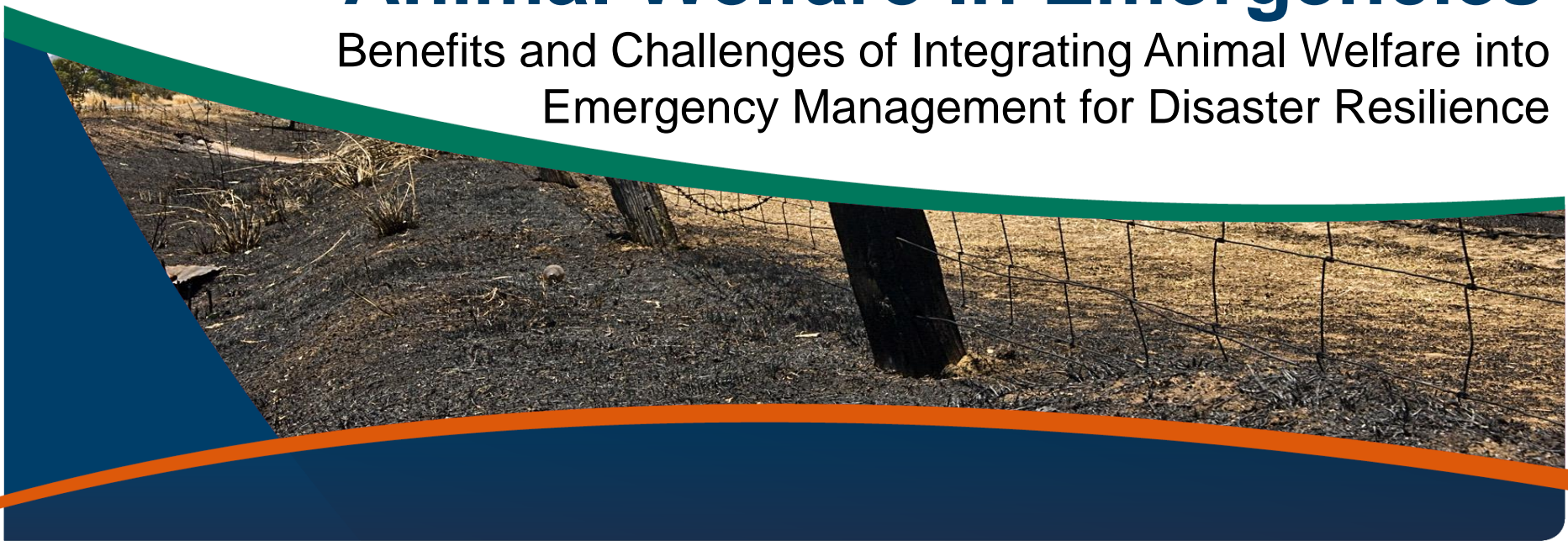




Department of
**Primary Industries and
Regional Development**

Animal Welfare In Emergencies

Benefits and Challenges of Integrating Animal Welfare into
Emergency Management for Disaster Resilience



Animal Welfare in Emergencies

Background

- 2009 Victorian Bushfires
- 2011 National Strategy for Disaster Resilience
- National Principles for planning for animals in disasters
- WA fire events
- DPIRD assigned the role and responsibility for the coordination of animal welfare in emergencies
- State Animal Welfare Emergency Coordinator appointed
- State Emergency Animal Welfare Plan



Animal Welfare in Emergencies

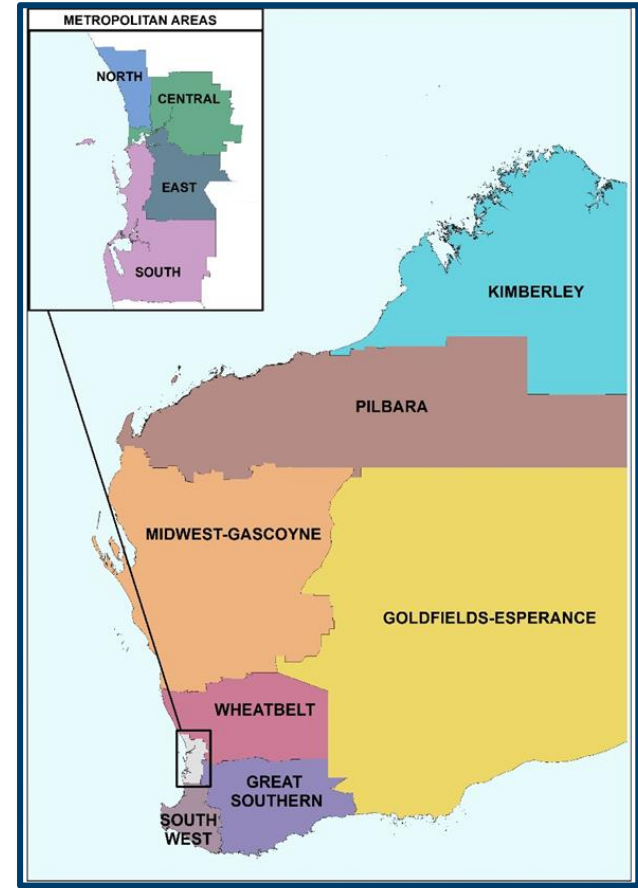
Background

WA challenges

- Large land area
- Small population
- Diverse climatic zones
- Full range of natural disasters

WA emergency management

- State Emergency Management Committee
- District Emergency Management Committee
- Local Emergency Management Committee – Local Emergency Management Arrangements



Western Australia's Emergency Management Districts

<https://www.oem.wa.gov.au/about-us/the-semc/district-emergency-management-committees>



Department of
**Primary Industries and
Regional Development**

Animal Welfare in Emergencies

Shared Responsibility

- **Everyone has a responsibility**
- **Disaster resilient communities**
 - Proactive and 'self' motivated
 - Industry expertise
 - Government support

Prevention. Preparation. Response. Recovery

- **Person in charge of an animal**
- **Local Emergency Management Arrangements**
- **Emergency Resource Support Organisation**
- **State Emergency Animal Welfare Plan**



Animal Welfare in Emergencies

Prevention and Preparation

- **Legislative requirements**

- Acts and Regulations
- Preventative activities
- Capability and Capacity building

- **Evacuated or not evacuated**

- **Engagement**

- Stakeholders
- Community
- Committee for Animal Welfare in Emergencies

- **Support planning**

Evacuated Animals	Non Evacuated Animals
- Availability of transportation support and advice	- Management of displaced and stray animals
- Suitability of evacuation centres to cater to persons with animals	- Assessment of impacted animals
- Access to information and resources for persons evacuating with animals	- Treatment of impacted animals
- Management of displaced animals	- Humane euthanasia and disposal of impacted animals
	- Emergency food, water, shelter
- Recovery requirements: short and long term	

Animal Welfare in Emergencies

Response and Recovery

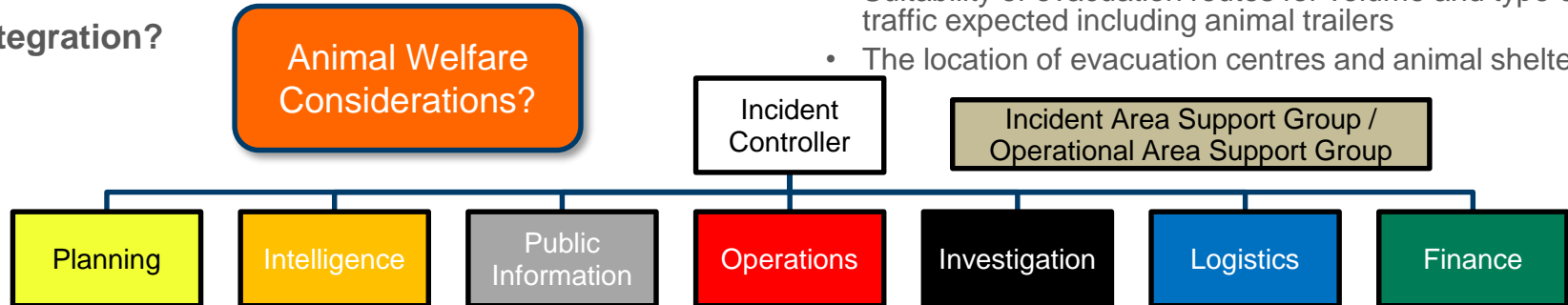
Hazard Management Agency

- Control of response activities
- Consistent and effective communication
- Consideration of shared responsibility

Human life and safety

- Animal welfare vs safety of the community and individuals
- Evacuation planning
 - How early to warn of evacuation to allow residents to prepare animals,
 - Suitability of evacuation routes for volume and type of traffic expected including animal trailers
 - The location of evacuation centres and animal shelters

Integration?



Animal Welfare in Emergencies

Response and Recovery

Animal welfare

- Hazard controlled, human life no longer at risk
- Recovery phase
- Hazard impacts vs consequence of response
- Limitations of access
- Emotive
- Generation of new impacts to human life and safety

Social and digital support

- Traditional and social media
- Inundation of voluntary support

- Benefit vs hindrance
- Engagement

Return to pre-incident condition

Review





Department of
**Primary Industries and
Regional Development**

Animal Welfare in Emergencies

Into the future

SEAWP endorsement in December 2018

Integration into emergency management

Build capability and capacity





Department of
**Primary Industries and
Regional Development**

Thank you

Visit dpird.wa.gov.au

sawec@dpird.wa.gov.au

Important disclaimer

The Chief Executive Officer of the Department of Primary Industries and Regional Development and the State of Western Australia accept no liability whatsoever by reason of negligence or otherwise arising from the use or release of this information or any part of it.

© State of Western Australia 2018