

adrc 25

Australian Disaster
Resilience Conference

#ADRC25

Aligned
to the



afac25
powered by INTERSCHUTZ
CONFERENCE AND EXHIBITION

26 – 28 AUGUST 2025
Perth, Western Australia

Q&A | Slido.com | #ADRC25



Addressing and understanding heat vulnerability: The importance of a cross-sector approach



Acknowledgement of Country



It is integral that we acknowledge I am on Whadjuk Nyoongar Boodja and that this land belongs to the Whadjuk people. We would like to take this opportunity to pay respects and show admiration for all Aboriginal and Torres Strait Islander people and their connection to Country. We take care in acknowledging and paying respects to Elders past and present.

Project Aims

- **Project Purpose:** The purpose of this project was to map regions impacted by high heat against vulnerable populations affected by high-heat across WA and develop targeted strategies, actions and resources to enable communities, including government agencies, and those most vulnerable to better prepare for high heat-related consequences to their health and well-being.





Our place-based approach





Working with Community for community





Port Hedland (Kariyarra Country)





Stage 1

We reached out to several community groups and organizations. We started with the Kariyarra people, as that is best practice, and they are the traditional owners of Hedland.



We also worked with other organizations to find out communities' priorities, including Care For Hedland, Julyardi, Well Women's, Headspace, the Youth Advisory Council and the Youth Involvement Council.

After consultation with all these groups, careful consideration and yarning with local government we had some proposed interventions.





Stage 2

We developed interventions and brought them to local government, discussed feasibility and then reported back to all these groups being accountable for taking action.

After receiving further feedback on the interventions from community and local organizations we began costing, theorizing and confirming interventions.

We began co-creating these interventions and what they look like with the Youth Involvement Council, Wangka Maya and Headspace.





Stage 3 - Implementation



- Our interventions in action, here is what we achieved in Hedland.
- These are some of our key interventions.



Youth Education

Young people at YIC assisted in designing hats for cooling packs.

We created a curriculum with five lessons for young people to develop their understanding of the effects of extreme and what they can do to protect themselves.

These sessions included a heat impact on health session, a session to learn how to stay cool, a make your own electrolyte session, a mindfulness session (headspace) and an Elder led session.



Drinking fountains

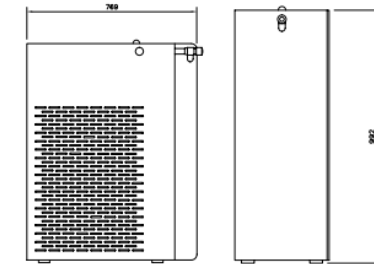
Young people at Youth Advisory Council (YAC) have advocated for years to get access to clean, safe, filtered and cold drinking water for Hedland residents.

All the community groups we yarned with also said it was a priority.

Between YAC and our project, we successfully advocated to implement this infrastructure. We have funded two units to be installed late April.

The local government has committed to caring for these fountains for at least 5 years.

ARCHITECTURAL FOUNTAINS | CF200 CHILLED OUTDOOR DRINKING FOUNTAIN | SPECIFICATION SHEET

urban
+ Furniture
Fountains

MODEL

Model: CF200 Chilled
Outdoor Drinking Fountain
SKU: DFCF200
DFCF200D (with tap & dog
bowl)

DIMENSIONS

Total Height: 992mm
769mm x 370mm base

CERTIFICATIONS



FEATURES

- + Heavy Duty One Piece Steel Construction
- + Bottle Filler
- + Fully Welded not bolted
- + 316 S/S Basin and Fixings
- + Easy Action button
- + 30 L/hour chilling capacity
- + Australian Made
- + Vandal resistant
- + Concealed fixings

OPTIONS

- + Tap and Dog Bowl
- + Maintenance Tap
- + Carbon Filter
- + Inground Fixing Cage
- + Anti Graffiti Coating



The Shire of Bridgetown/Greenbushes

We have worked closely with Community Resource Centers, Libraries, Transitions Bridgetown and the Bridgetown Hub to develop interventions here.



We ran several community sessions where we asked the general population what was important to them.



Through collaboration with Local government, we have been able to implement a suite of interventions.





Bridgetown/Greenbushes Interventions

- Volunteer check-in heat service
- SMS heatwave warnings
- Cool spaces at Bridgetown Library, Bridgetown Hub, Greenbushes and Bridgetown CRC – activated when its over 35 degrees
- Cooling packs (pictured)
- Public drinking fountains
- Shade sails at local pool
- Tree planting
- Public bench
- Community development





The City of Rockingham

We have worked closely with Libraries, the local government, Rockingham hospital and community organizations to develop interventions here.



We worked with the local government based on community service feedback on what was important. As well as consultation with hospital team members.



Through collaboration with Local government, we have been able to implement a suite of interventions.





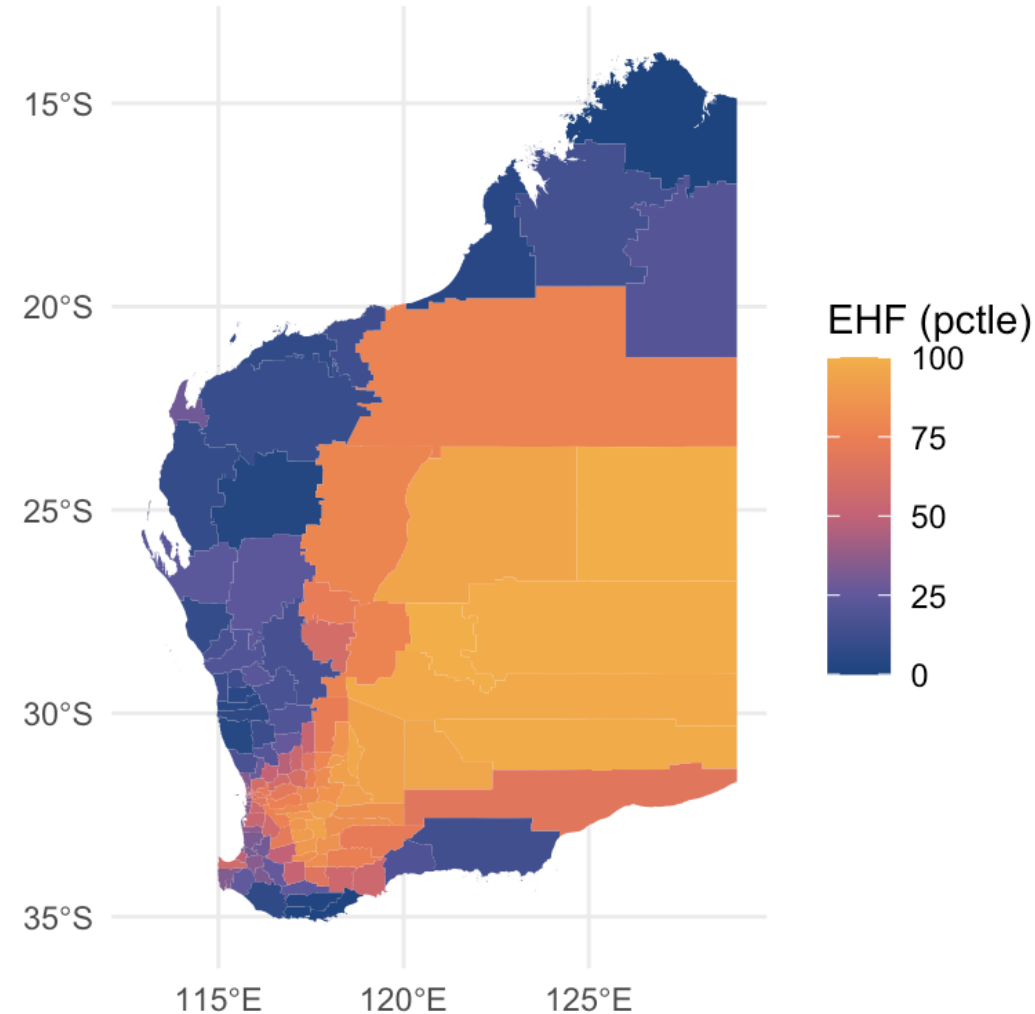
City of Rockingham

- Cool spaces at four community libraries
- Community development
- Home cooling subsidy schemes
- Heatwave ready events and workshops
- Outreach
- Library equipment
- Social media and video promotion/education
- Pharmacy sundowner event
- Free fans





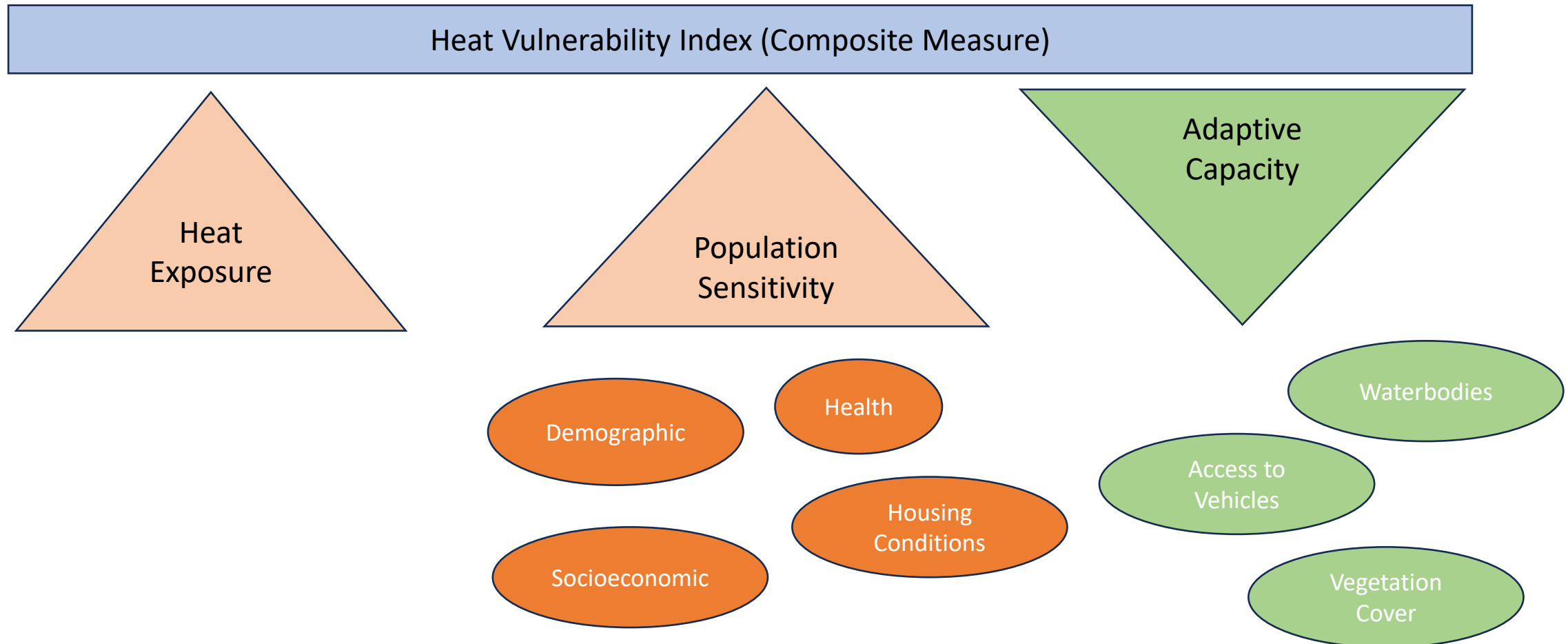
How do we measure heat exposure?



Average Excess Heat Factor by LGA, 2016-2021. Data provided by BOM.



Vulnerability Mapping





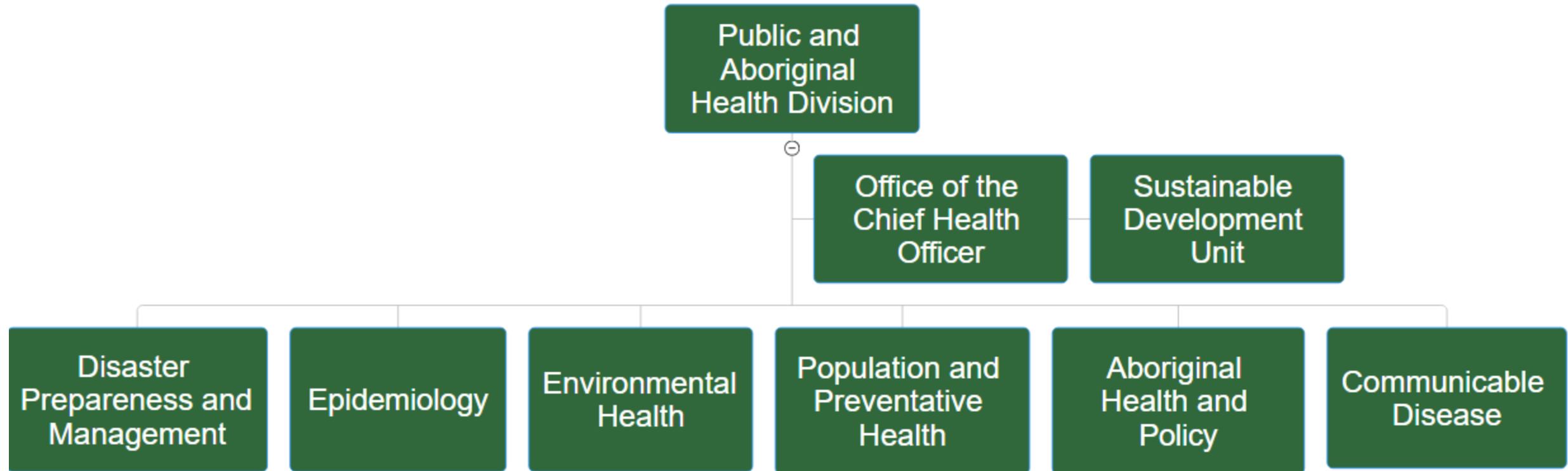
Wendy Sun

Lead Sustainable Development Officer
Public and Aboriginal Health Division
Department of Health WA

Department of Health's role in the project



Public and Aboriginal Health Division





Roles of DoH in heat planning and response

Statutory role

- Emergency Management Regulations 2006
 - Hazard Management Agency for heat in WA (Disaster Preparedness Management Directorate)
 - State Hazard Plan Heatwave
- Public Health Act 2016
 - State Public Health Plan
 - Local public health plans



Roles of DoH in heat planning and response

Functions and expertise

- Sustainable Development Unit
 - Climate adaptation
- Epidemiology Directorate
 - Health data
- Environmental Health Directorate
 - Water and food safety



Partnership role

- Shared latest policies and update
- Advised on the interventions through the Strategic Reference Group
- Provided health data for the heat vulnerability mapping
- Connected people e.g. AusEnHealth
- Shared project findings with relevant stakeholders



Project recommendations

1. Heat Action Plans (HAPs) are incorporated into local planning with clear actions and roles, accessible to community.
2. Communities across WA have free access to safe 'cool spaces' that are used to find relief during high heat periods.
3. Heat-specific interventions are evidence-based, using existing resources including the Heat Vulnerability Map.
4. Heat interventions, particularly access to water, greening, information sharing, and targeted climate actions, are fit for purpose.
5. Planning for high heat and implementing heat actions are done with those most at risk from high heat.
6. Aboriginal people in WA are decision-makers on heat-related work that affects their community on Country.



A way forward?

- **WACOSS planning to work with local government and communities to develop resilience to heat in different forms .**
- **WACOSS continuing further advocacy around the effects of heat and developing heat/heatwave interventions in communities.**



Use Slido for Q&A



Slido.com | #ADRC25



Thank you to the Australian Disaster Resilience Conference 2025 Sponsor



**A Help
Company**

Industry Partner Sponsor and Resilience Lane Sponsor