



Climate Partnerships

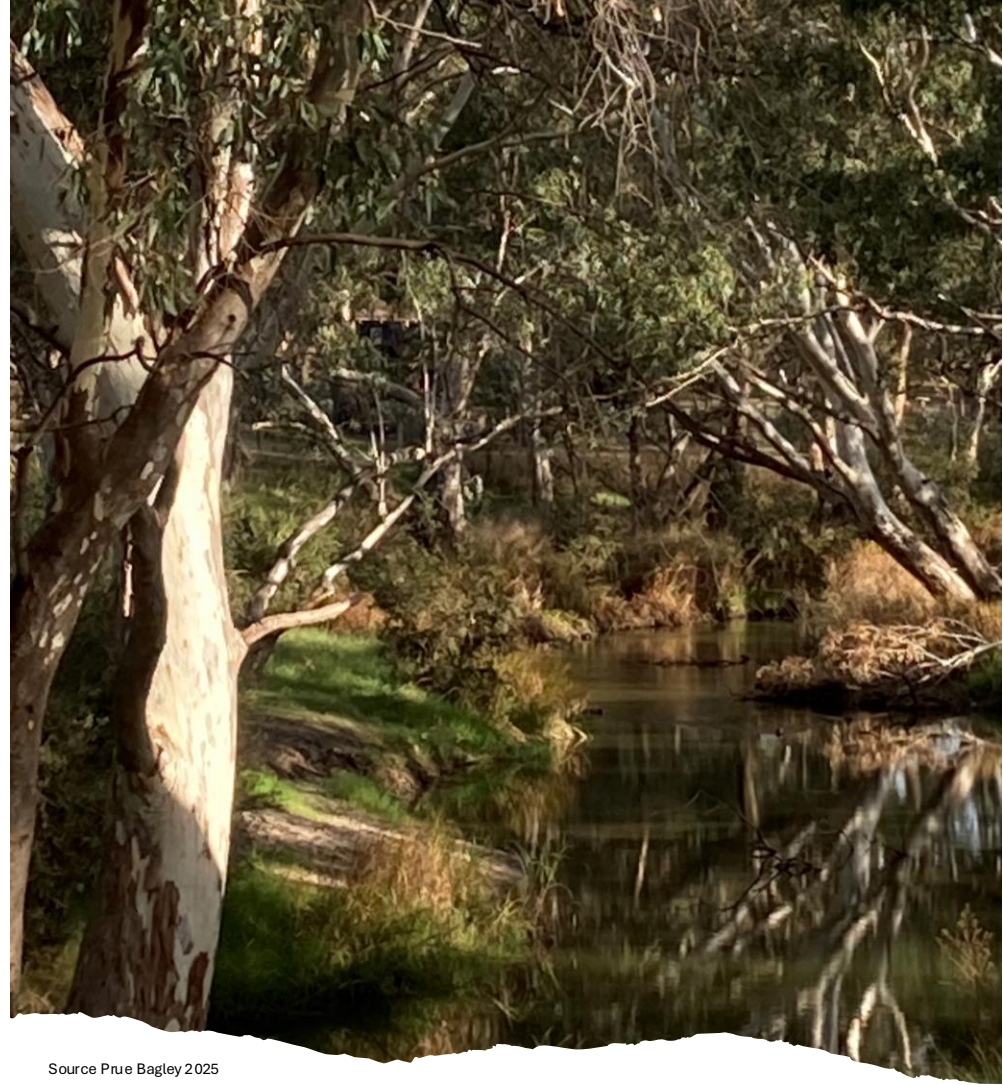
Disaster justice: Exploring community legal centres role in enabling collaborative approaches to place-based disaster resilience.

Anna Brazier – Senior Project Coordinator, Jesuit Social Services', Centre for Just Places.

Jack Piper – Climate Justice Lead, ARC Justice.

Ebony Hogg – Community Engagement Lead, Disaster Recovery and Climate Justice Eastern Community Legal Centre.





Source Prue Bagley 2025



Acknowledgement of Country

Source The Guardian, [Native Forests](#)

About the work

A three-year project working with community service organisations to strengthen place-based resilience in the Campaspe and Yarra Ranges communities through partnerships and collective action.



Who's involved



Photo taken on 12th September at Yarra Ranges Climate Partnerships Capacity Building workshop at Japara Living and Learning Centre.

Why collaborative action planning?



Why community service and health organisations?

- Often the first places people go to find information, and to access critical services during and following a disaster.
- Play a critical function in supporting community resilience because of their local knowledge and trusted relationships.
- They have an important role in addressing the complex and compounding impacts of climate change and disaster.

Why Community Legal Centres?



Photo from Eastern Community Legal Centre [news article](#) taken on August 6th 2021, Bringing together community to challenge racism in Melbourne's East L-R: Iresha Butthgamuwa (ECLC), Michael Smith (ECLC), Paul Hamer MP, Donna Askew (ECLC), Wilfred Wang (CHH), Dilnaz Bilimoria (CCOE), Saarah Ozeer (CCOE), Jaya Manchikanti (IndianCare Inc), Emma O'Brien (ECLC)

Where are we working

Yorta Yorta, Taungurung, Dja Dja Wurrung Country



Photo from Campaspe Shire Council Facebook page, 16th February 2025



Photo from 'The Ultimate Guide to Echuca', 4th July 2024 by Aus Weekend Escapes

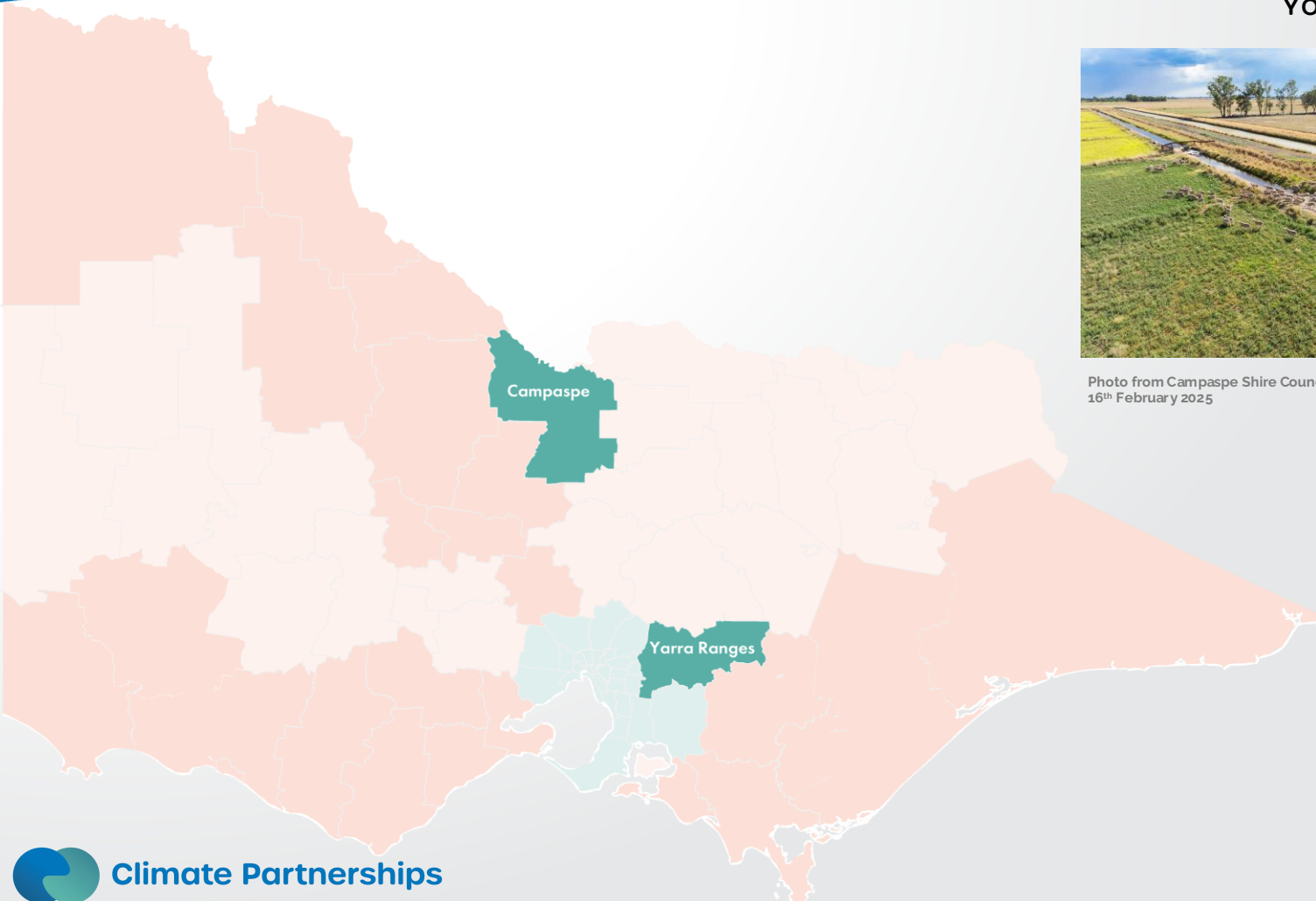
Wurundjeri Country



Photo from [Visit Victoria website](#) of Puffing Billy



Photo of '[Wild Orchid](#)' cottage in Olinda, Australia



Yarra Ranges



MELBOURNE, AUSTRALIA: Herald Sun newsarticle, ['More wild weather on the way after parts of Victoria still without power'](#), JUNE 19th, 2021



MELBOURNE, AUSTRALIA - [NewsWire Photos](#) JUNE 14th, 2021: Picture: by Wayne Taylor

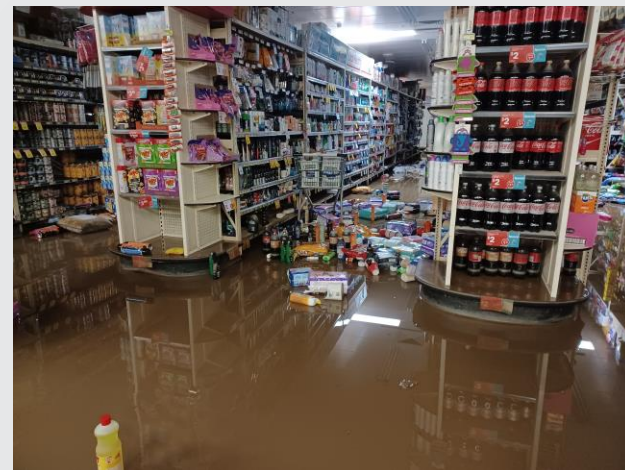
Campaspe



Supplied: Leigh Wilson - Rochester



Supplied: Leigh Wilson - Rochester



Supplied: Leigh Wilson - Rochester

Equity and Justice

Equality



The assumption is that **everyone benefits from the same supports**. This is equal treatment.

Equity



Everyone gets the supports they need (this is the concept of "affirmative action"), thus producing equity.

Justice



All 3 can see the game without supports or accommodations because **the cause(s) of the inequity was addressed**. The systemic barrier has been removed.

What does climate justice mean to us?

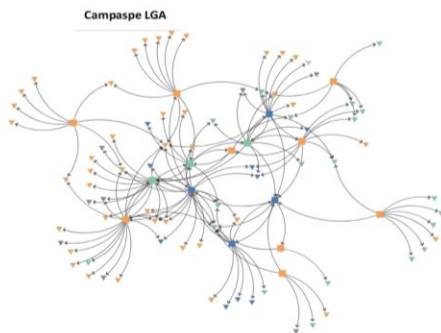
Climate change is a **social justice issue** with climate change unevenly impacting our **social** and **ecological** systems.

Communities experiencing disadvantage or marginalisation are often most at risk because they have **fewer resources to cope, adapt and recover** ([Dunn et al. 2022](#)).

Steps in our process



Coalition Building



Social Network Analysis



Collaborative Planning &
Group Model Building

Mobilising Climate Just and
Resilient Communities in
Melbourne's West

Collaborative Action Plan

November 2022



Plan dissemination &
implementation



Climate Partnerships

Key lessons

- Using a grounded collaborative approach creates a unique space for taking local action on disaster resilience
- Provides the opportunity for diverse stakeholders to work together, often for the first time.
- The timing feels right for taking action and willingness to engage
- Placed based approach means people in the room bring a deep understanding of the local context

What's challenging?

- Recovery is complex, it is not a linear journey
- Equitable engagement in the process – structural barriers for First Nations and smaller community service organisations
- Resource intensive and invisible nature of the work
- Strong appetite for meaningful engagement with emergency services



Climate Partnerships

Questions?





Thank you



Visit the Climate Partnerships
webpage at: www.cjp.org.au
or scan the QR code.

