

adrc 25

Australian Disaster
Resilience Conference

#ADRC25

Aligned
to the



afac25
powered by INTERSCHUTZ
CONFERENCE AND EXHIBITION

26 – 28 AUGUST 2025
Perth, Western Australia

Q&A | Slido.com | #ADRC25



Empowering Resilience:

Advancing Inclusive Emergency Planning with Disability Inclusive Emergency Planning (DIEP) Forums

A/Prof Michelle Villeneuve
University of Sydney



Australian Government
National Emergency
Management Agency



Australian Institute for
Disaster Resilience



A Help
Company

Empowering Resilience:

*Advancing Inclusive Emergency Planning with Disability
Inclusive Emergency Planning (DIEP) Forums*



Contact:

Associate Professor Michelle Villeneuve

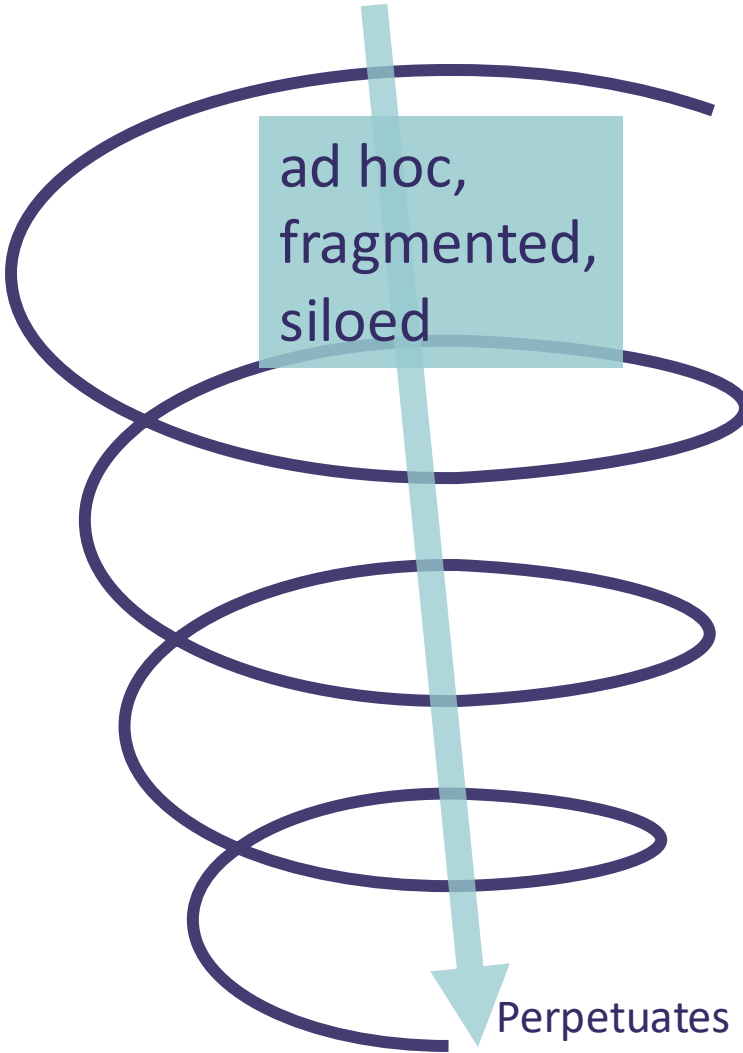
Deputy Director, Centre for Disability Research and Policy

Collaborating.4Inclusion@Sydney.edu.au



disability is a hot potato

Root Challenges



ad hoc,
fragmented,
siloed

1. A System Built for the Majority "*the greatest good for the greatest number*"
2. Systemic Invisibility
3. Unequal Access to Safety Resources
4. Fragile or Nonexistent Networks

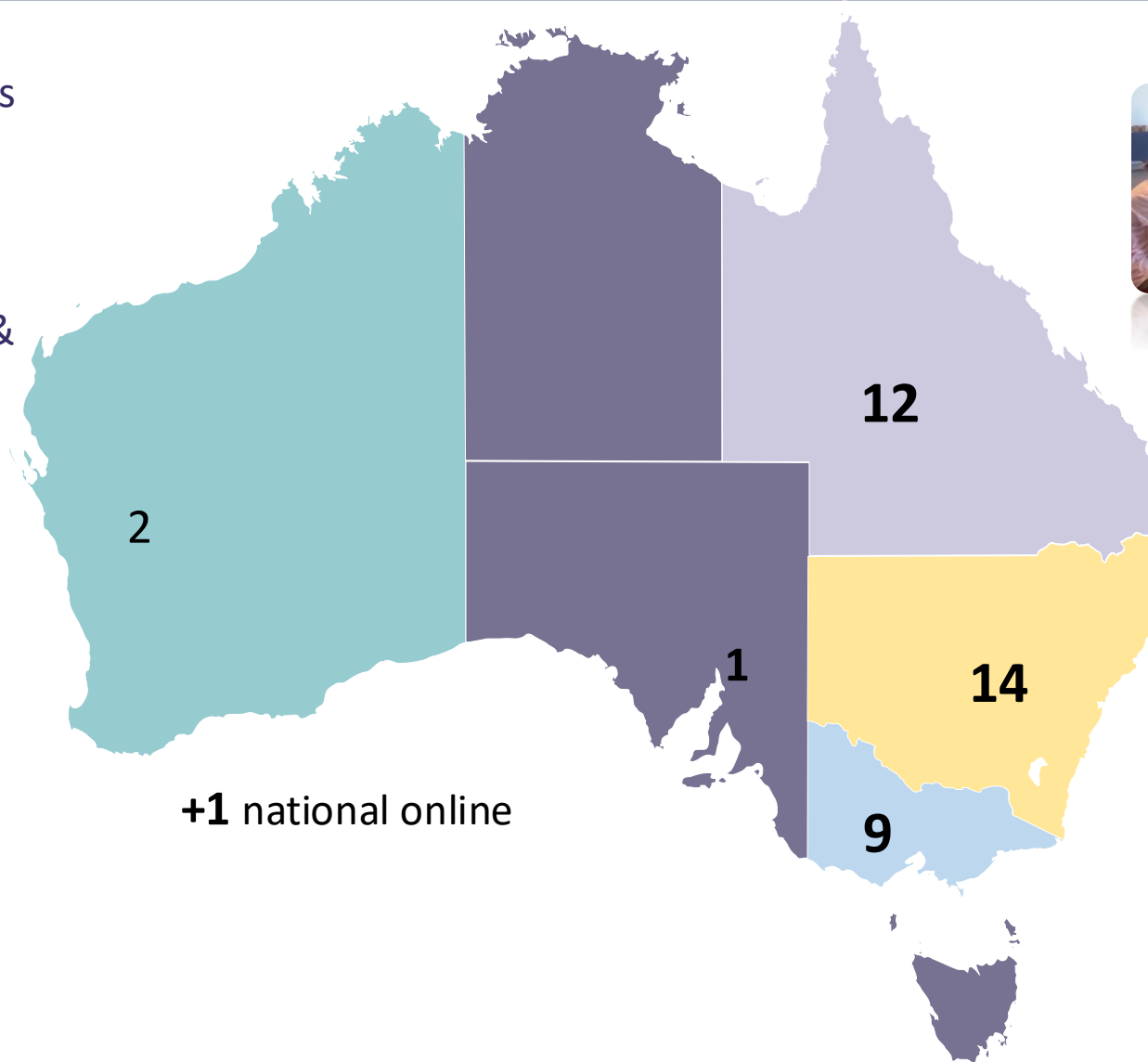
Perpetuates disproportionate
risks to safety and well-being
of people with disability

Disability Inclusive Emergency Planning (DIEP)

39 multi-stakeholder forums

1,140 participants

280 people with disability & carers





Government Hosts



Shoalhaven Disability Inclusive Emergency Preparedness Forum

You have been invited to participate in this forum because you have lived experience of disability or work in the area of disability, health or emergency management. We want to learn from your knowledge and experiences about how to make emergency management more inclusive of people with disability and carers.



This workshop is part of a research study being conducted by University of Sydney researchers.

Participation is voluntary, you do not have to participate. It is your choice.

At the workshop you will learn about:

- People-centred approaches to emergency management
- Factors that increase risk for people with disability in emergencies
- Strategies to reduce risk and increase the resilience of people with disability to disaster
- Local community assets that can be shared before, during and after an emergency to keep people safe.

Where & When

16 November 2022 - 10am - 3pm @ the Dunn Lewis Centre - 141 St Vincent St, Ulladulla
For further inquiries contact Alasdair Stratton - Vinnies M - 0401863367 or E - Alasdair.Stratton@vinnies.com.au

Forum registrations bookings online via Try Booking at www.trybooking.com/CDIJ or via the adjacent QR code



DISABILITY INCLUSIVE EMERGENCY PREPAREDNESS FORUM



DISABILITY INCLUSIVE EMERGENCY PLANNING Community Workshop

Hosted by the Shire of Mundaring, DFES Community Preparedness and University of Sydney, this community conversation will discuss how to reduce risk and increase resilience for people living with a disability before, during and after disasters.

Who is invited?

- Local people living with disability and their carers
- Industry service providers
- Emergency service agencies

Participatory support (ie transport, Auslan interpreter) available on request.

RSVP to Karen White, Coordinator Community Engagement, on 9290 6715 or via communityengagement@mundaring.wa.gov.au, advising of any dietary or participatory requirements.

When: 10.00am to 3.00pm
Monday 11 September 2023
Where: Boya Community Centre 119-135 Scott Street Helena Valley
Free event Catering provided

RSVP to Karen White, Coordinator Community Engagement, on 9290 6715 or via communityengagement@mundaring.wa.gov.au, advising of any dietary or participatory requirements.

Logos: THE UNIVERSITY OF SYDNEY, Shire of MUNDARING, @shireofmundaring, www.mundaring.wa.gov.au

DISABILITY INCLUSIVE EMERGENCY PLANNING FORUM

When: Thursday 20 July 2023
Time: 10.00 am - 3.00 pm
Where: Eliston Family & Community Centre CLYDE

In partnership with the CFA Red Cross VCOSS DARU University of Sydney

For more information visit www.trybooking.com/CH RKF or scan the QR Code

TIS: 131450 (Translating and Interpreting Service)

Logos: City of Casey, CFA, Red Cross, VCOSS, DARU, University of Sydney

Disability Inclusive Emergency Planning Forum

Wednesday 13 September 2023, 10am - 3pm

Baldvis Indoor Sports Complex, Eighty Road, Baldvis

Connect - Share - Collaborate - Support
Be part of local community-led conversations and learn about:



People-centred approaches to plan for the support needs of people with disability in disasters.



Strategies to reduce the risk and increase the resilience of people with disability before, during and after disasters.



Factors that increase risk for people with disability in disasters.



Local community assets that can be shared to keep people safe.

Lunch and refreshments will be provided. Please RSVP by emailing customer@rockingham.wa.gov.au before 5 September 2023.



Forum Launches Person-Centred Emergency Planning For People With Disabilities

by News QP The Area - Modern Media - May 8, 2023



The Disability Inclusive Emergency Planning (DIEP) Forum, with facilitator Associate Professor Michelle Villeneuve.

THE City of Cochs Harbour (CoCH) hosted a Disability Inclusive Emergency Planning (DIEP) Forum on Wednesday 26 April at Cavanbah Hall, to help empower the community to prepare to keep each other as safe as possible in the event of a disaster.

Luke Barbagallo, the Community Resilience Recovery Coordinator from CoCH was in attendance for the day, welcoming Michelle Villeneuve from the University of Sydney's 'Leave nobody behind' project, who facilitated a day of lively discussion.

CITY OF GREATER BENDIGO Disability Inclusive Emergency Planning Forum

Let's not leave anyone behind in an emergency

When: 10am - 3pm Thursday June 15, 2023
Where: Bendigo Regional Tennis Centre 23-25 Nelson Street, Bendigo

This Forum aims to activate disability inclusive emergency planning locally at the individual, community and local government level.

- Interactive forum designed to activate inclusive community-led preparedness
- Join us to discuss local preparedness and learn about what supports exist
- Help us to understand your support needs

Forum will be fully catered. Support available for participation support if needed.

Bookings are essential and can be made at www.eventbrite.com.au/disability-inclusive-emergency-planning-forum-bendigo or by scanning the QR code.

Logos: CITY OF GREATER BENDIGO, SYDNEY, VCOSS, BENDIGO

Media release

TWEED SHIRE COUNCIL
28 June 2023

Disability Inclusiveness in Emergency Planning under the spotlight at Tweed community workshop

People living with disability give voice to improving inclusive emergency management



Facilitator of the Tweed Disability Inclusiveness in Emergency Planning workshop Michelle Villeneuve, in conversation with (from left) carer Jack Yates, Tweed Equal Access Advisory Committee member Kyle Sculley and NSW SES Murrumbidgee Unit Coordinator Jack Frost.

Learning Together



1. Individual preparedness
2. Organisational preparedness
3. Accessible community assets
4. Community plans

Data analysis & synthesis

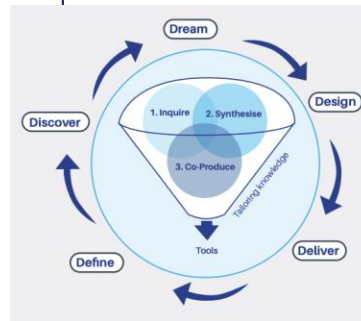
DISABILITY INCLUSIVE EMERGENCY PLANNING (DIEP)FORUM

HAWKESBURY DIEP FORUM

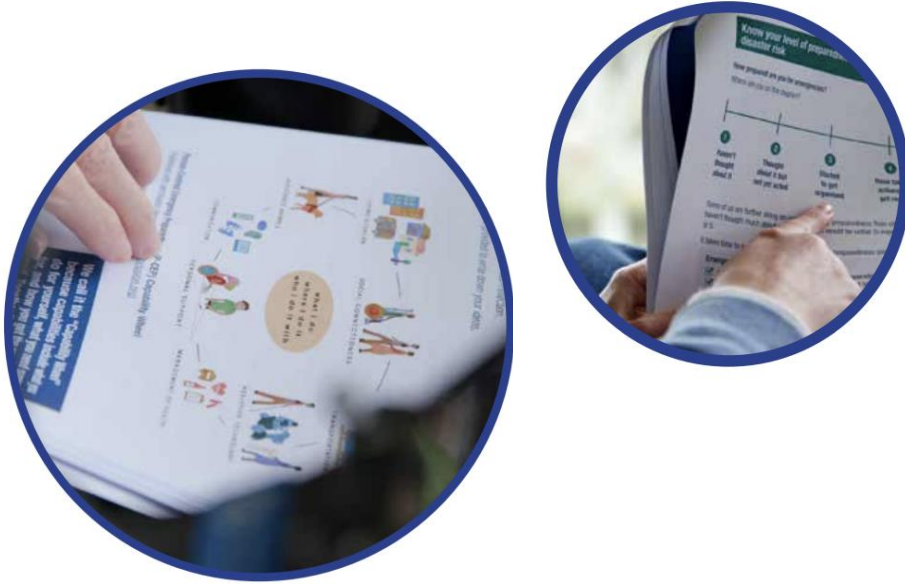


Citation:

Villeneuve, M., & Crawford, T. (2023). *Disability Inclusive Emergency Planning Forum: HAWKESBURY*. Centre for Disability Research and Policy, The University of Sydney, NSW, 2006



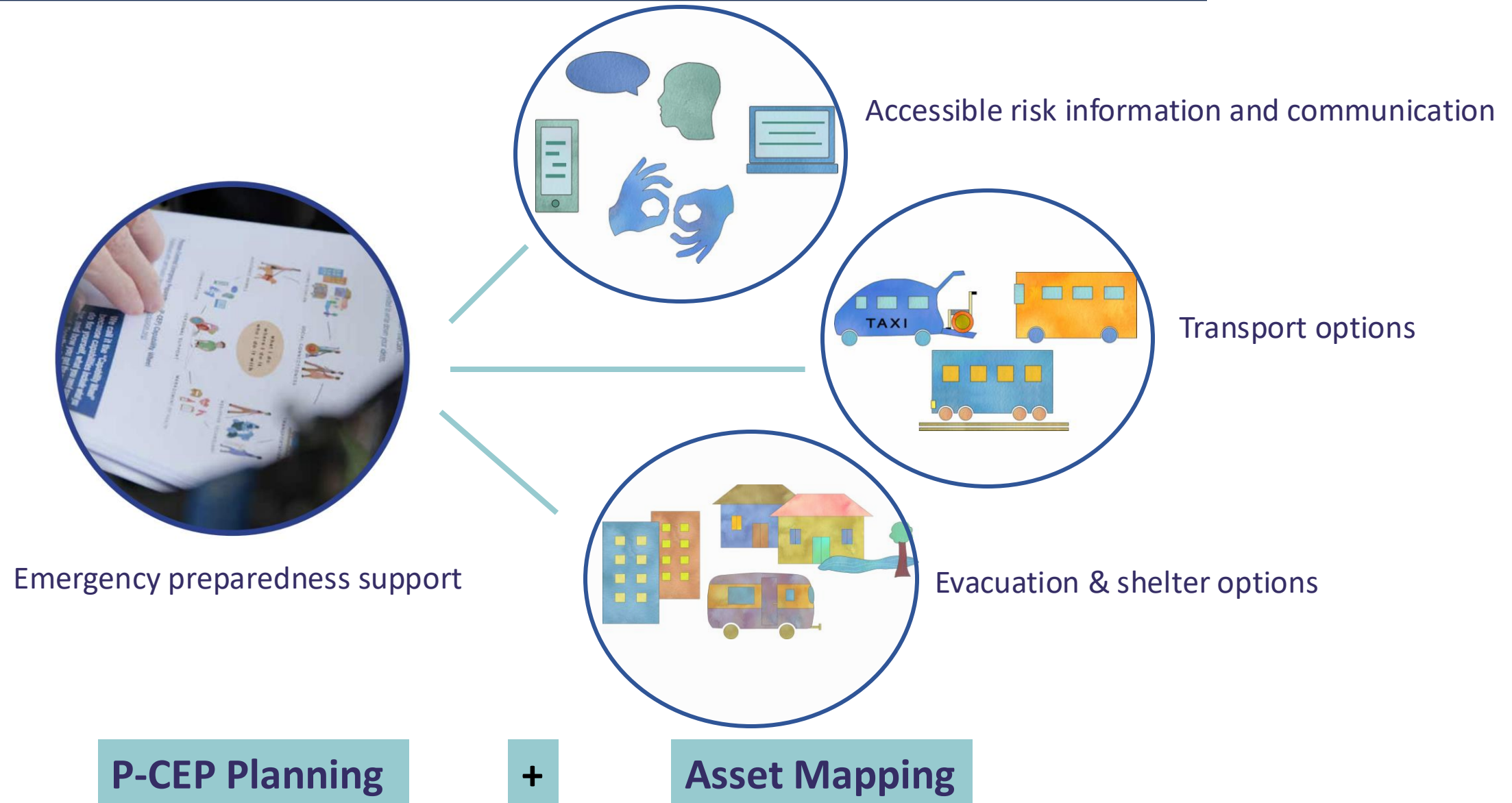
Emergency Preparedness Levels are Low



1	Identify your strengths and support needs in everyday life
2	Know your level of emergency preparedness and learn about your disaster risk
3	Plan for how you will manage your support needs in an emergency
4	Communicate the plan with the people in your support network and address gaps through collaboration

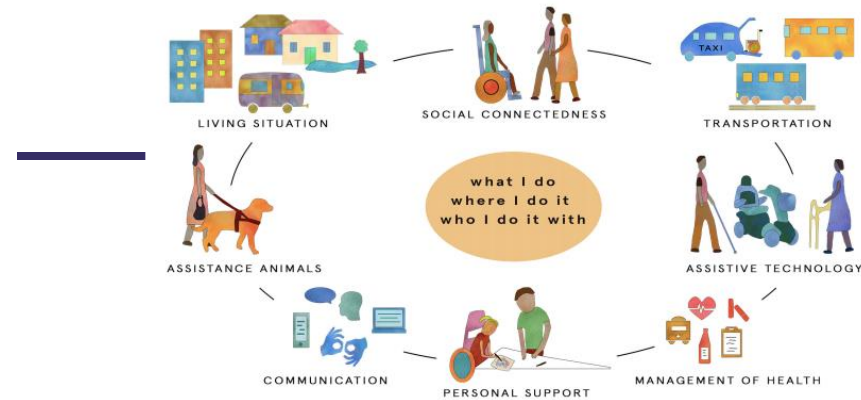
- plans are in our heads
- not communicated
- not tested

Priorities for Action



Organisational Emergency Preparedness

1. Service continuity
for protection and
well-being



2. Mapping &
mobilising accessible
assets

Individual ↔ Organisational ↔ Community

Organisational Emergency Preparedness (OEP)



The OEP supports community & disability organisations to self-assess their emergency management capabilities:

- ✿ preparedness
- ✿ capabilities
- ✿ accessible resources

To complete the digital OEP survey, follow the QR code:



DISABILITY INCLUSIVE EMERGENCY MANAGEMENT TOOLKIT





knotworking

Maturity Levels



Initiate

Develop

Lead

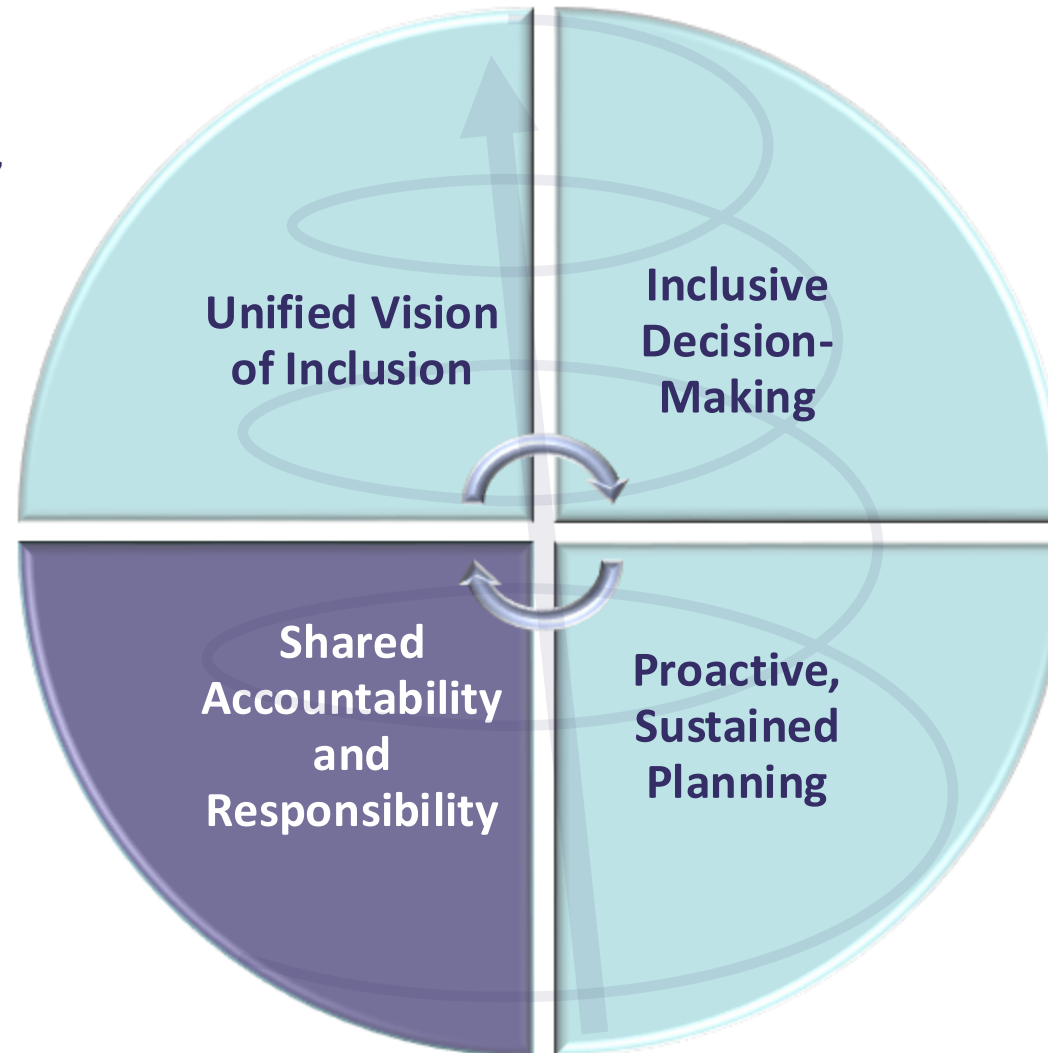
4 ways to grow disability inclusion in emergency management

2. Establish equity and inclusion as foundational, not optional

Principles

1. Autonomy and Safety
2. Person-centred and Strengths-based
3. Non-discriminatory and Collaborative
4. Diversity, Representation and Inclusion
5. Accessibility and Quality
6. Learning and Capacity development
7. Data and Evidence

1. Embed collaboration & grow its governance through local action



3. Center the voices of people with disability and other marginalised groups in designing and implementing solutions



4. Shift from reactive crisis management to long-term investment in pre-planning for inclusion and resilience

Person-centred tools grow disability inclusion

Equity, inclusion and resilience



- **Align** practice and policy
- **Build** cross-sector capability
- **Enable** systems change

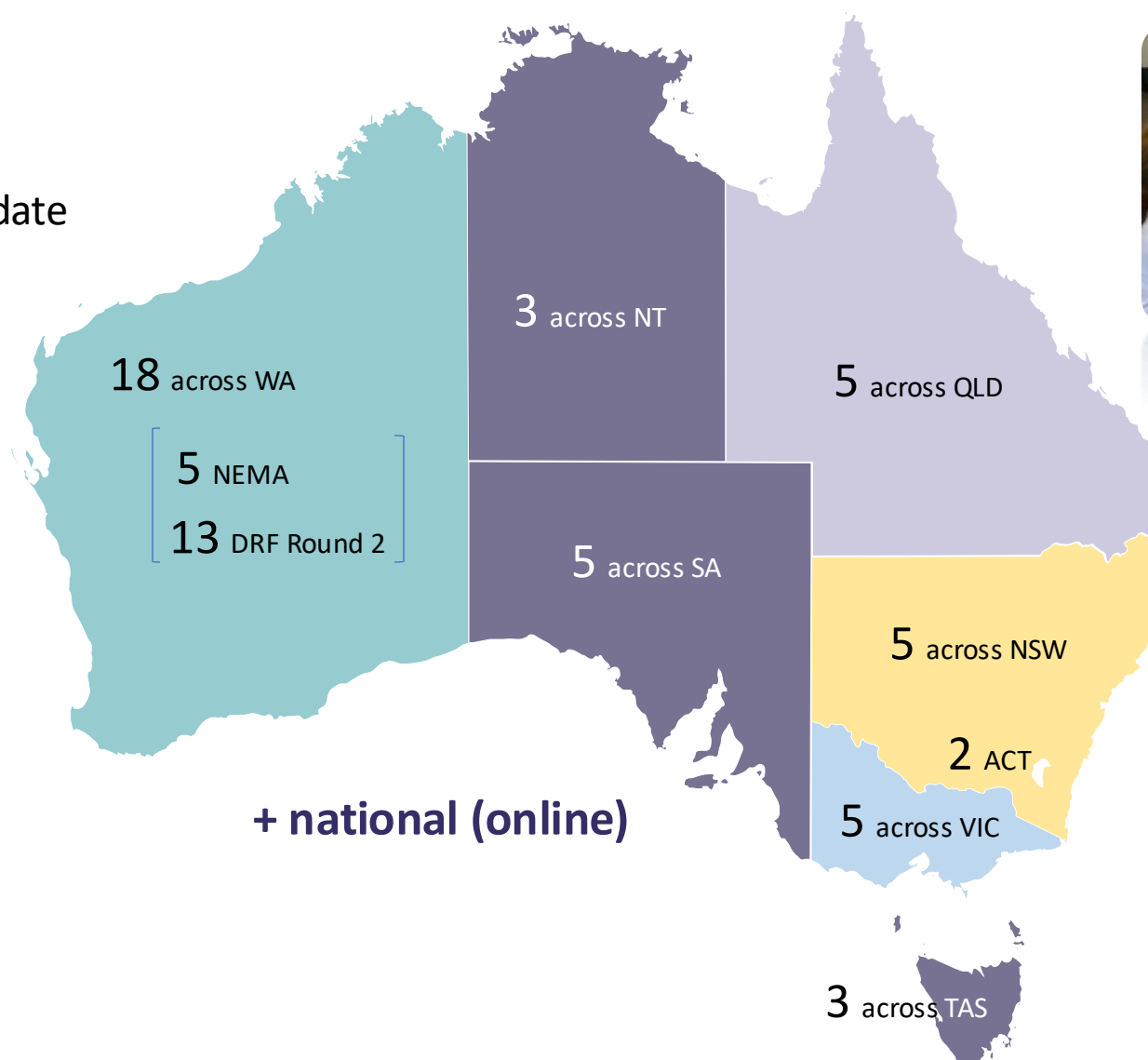
collaborating4inclusion.org

2025 National DIEP Forums



Australian Government
National Emergency Management Agency

- 50 forums + eLearning
 - 8 jurisdictions
 - 12 completed to date



www.collaborating4inclusion.org

What's next?



Data-Informed Decision Making
(2025 - 2028)

Australian Research Council Industry
Fellowship: IM250100233



Contact



Collaborating.4Inclusion@Sydney.edu.au



www.collaborating4inclusion.org



THE UNIVERSITY OF
SYDNEY





Thank you to the Australian Disaster Resilience Conference 2025 Sponsor



**A Help
Company**

Industry Partner Sponsor and Resilience Lane Sponsor