

Restoring Mana through radical transformation

Navigating disaster recovery with Te Hautū Waka

Te Kawerau ā Maki Iwi

- **Hikurangi | West Auckland** is our heartland with interests from the North to South Auckland
- “Settled” Iwi
- No Marae
- Guiding values
 - Mana Motuhake | Self Determination
 - Mātauranga Māori | Culture driven
 - Kaitiakitanga | Sustainable
 - Whānau | People focused
 - Auaha | Innovation



Kia ora.

Hautū Waka is a methodology presented by renowned tohunga and kaumātua Rereata Makiha.

The phases within Hautū Waka, as explained by Papa Rereata, are drawn from the ancient karakia Te Kune Te Pumau, recited by Te Kohuora of Rongoroa and recorded by missionary Richard Taylor (Nicholson, 2020). Guided by Papa Rereata, Roimata Taniwha Pao and Ayla Hoeta have worked with the elements of this karakia to create the framework known today as Te Hautū Waka.

We acknowledge Te Hautū Waka as a methodology that has shaped our approach to systems thinking – helping us to navigate complexity, design processes, and embed reflection and evaluation. The phases within Hautū Waka offer a way to apply ancient ways of knowing, seeing, and doing in contemporary contexts, grounding our work in the wisdom of those who came before us.

We also acknowledge Roimata and Ayla for creating and sharing the following slides with us. For more information, visit [Auckland Co-Design Lab](#).

Te Hautū Waka



Whakariterite
Preparing for your
journey



Te Kitenga
Sighting
tohu



Te Whāinga
Exploring tohu



Te Rawenga
Celebrate, reflect
Acknowledge
tohu



Te Whiwhinga
Work still to be done
Te Rewenga in sight



Te Rapunga
Venturing into the
unknown

Whakariterite

Preparing the waka.
Preparation of crew.

Making sure we have everything needed
for the journey ahead.

Purpose alignment & identify skillset. What
resources are needed and what resources
we leave behind.



Whakariterite | Preparing for your journey

- How well do you understand yourself, your positionality and that of your organisation?
- How well do you understand the context and history of this place and its people?
- What are the institutional and personal relationships like?

Te Rapunga

Venturing into the unknown.

Infinite Potential.

Our collective knowledge and
experience attunes us to noticing
tohu that will guide us to our
common aspirations.



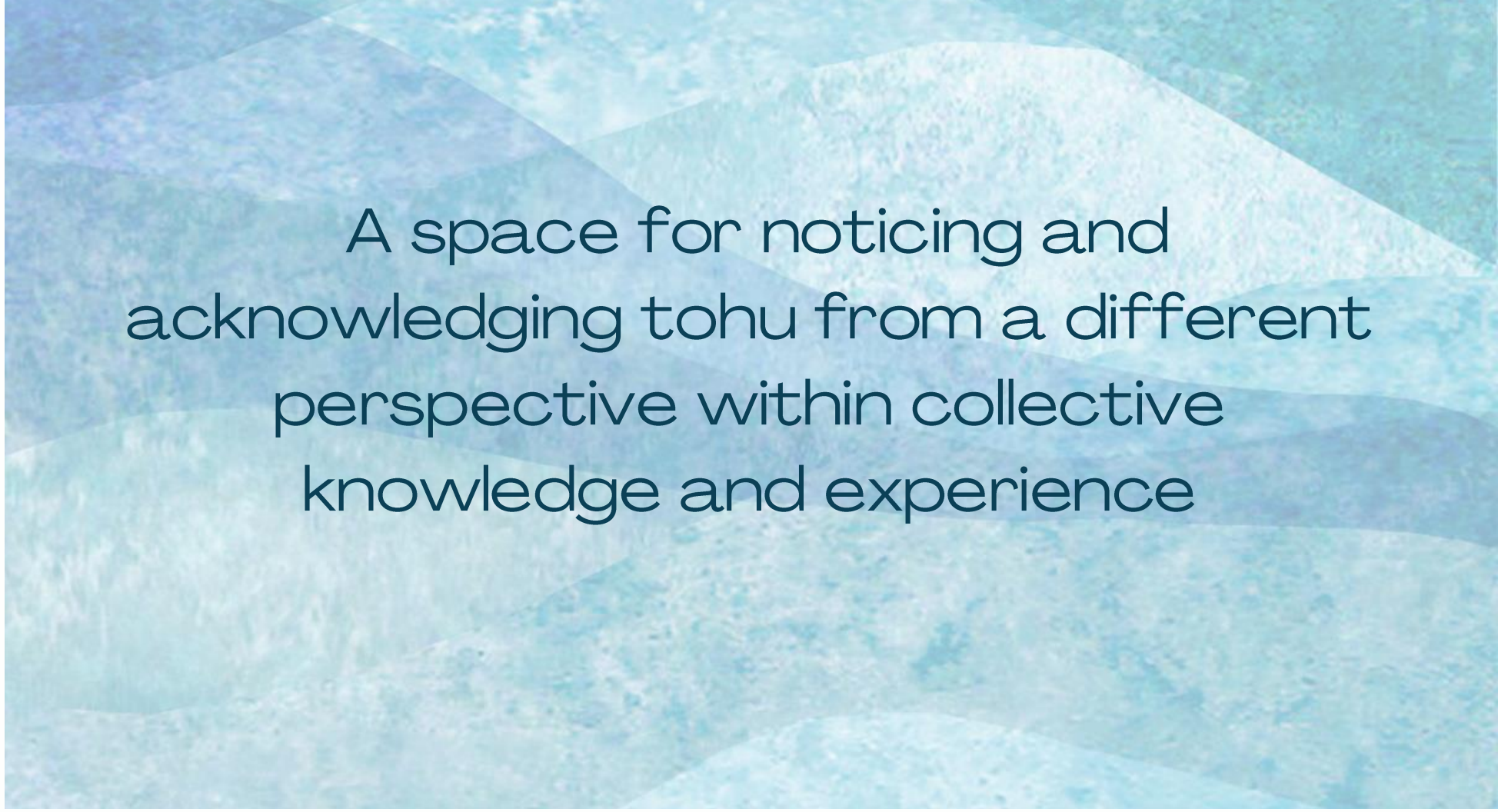
Te Rapunga | Venturing into the unknown

- How do you build and sustain relationships?
- How are you creating space for personal and collective reflection and learning?

Te Kitenga



A space for noticing and acknowledging tohu from a different perspective within collective knowledge and experience

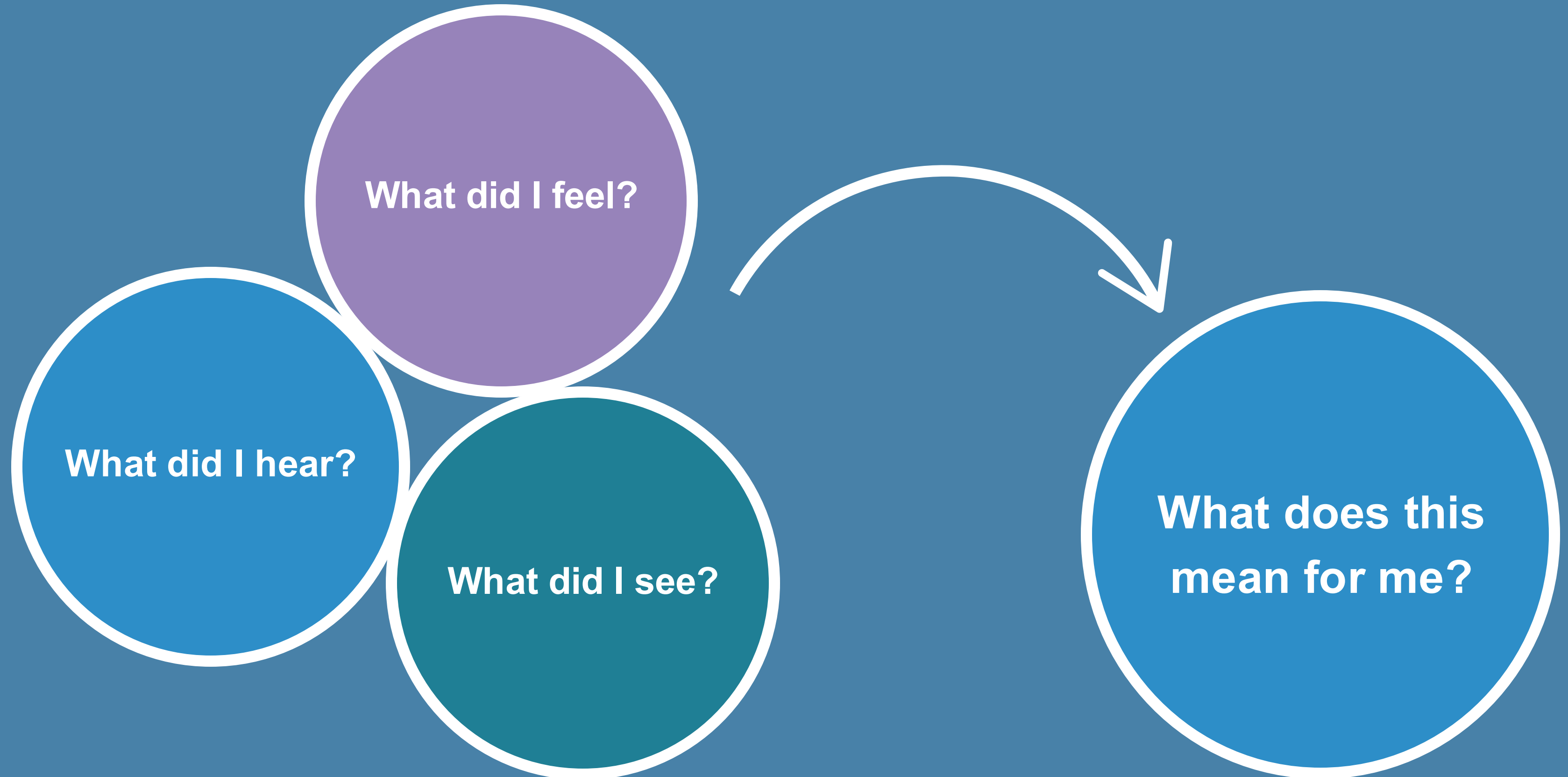


Sighting/noticing tohu to project you forward.

Attuning to where we are and what is going on around us.



Te Kitenga | Looking for tohu (signs)



Te Whāinga

The background features a stylized illustration of a Maori waka (canoe) at the bottom, pointing upwards. The sea is a deep blue with white wave lines. A large, light blue circular motif is centered in the upper half, containing a landscape with brown clouds, a blue body of water, and several black birds in flight. The overall color palette is dominated by blues and browns.

Which way should we go?
This is a phase of digging
deeper, researching and
exploring tohu that will set
the journey path

Te Whaingā | Exploring the tohu (signs)

- Have you created a responsive system that can learn and flex to what is uncovered?
- How do you create compelling narratives about what might be possible?

Te Whiwhinga

The background is a stylized illustration of a seascape. The sky is a gradient of light blue to dark blue. There are several large, white, puffy clouds with long, horizontal, swirling lines trailing behind them, suggesting wind or movement. Several dark blue birds are flying in the sky. The sea is a dark blue with white-capped waves. On the left, a small sailboat with a pink hull and two white sails is sailing. On the right, there is a small green island with a white cloud on top. The overall style is modern and graphic.

Tohu are clear and the course has been set to move towards the collective vision.

We can see a way forward and are confident in our direction and understand the work that needs to be done.

Te Whiwhinga | Sailing with purpose

- How are we capturing our learning?
- What are the measurable outcomes we are seeing?
- What systems do they support?

Te Rawenga

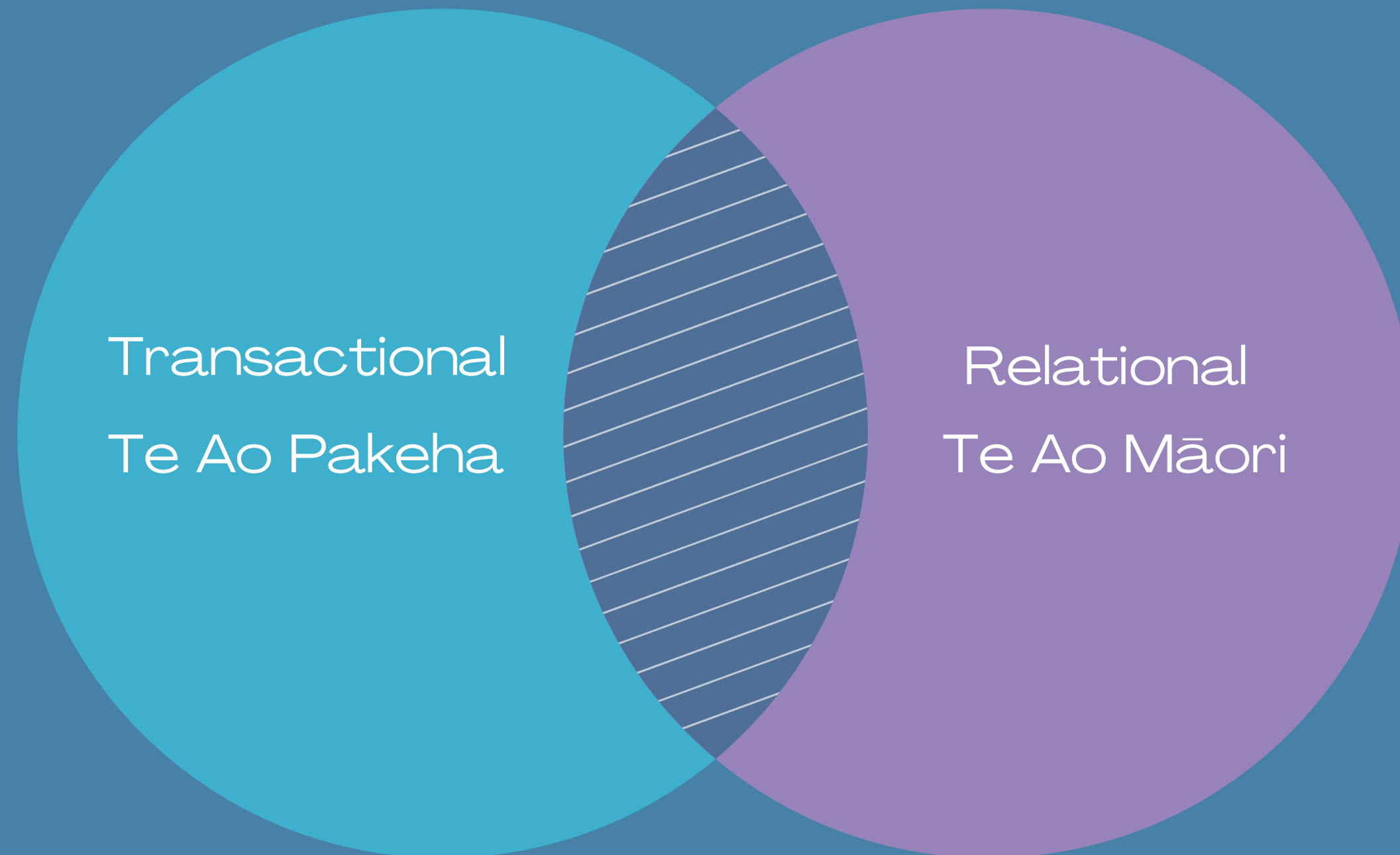
Celebrate, reflect, acknowledge and share the
tohu and the learnings of tohu from the journey as
a guide for others to follow.



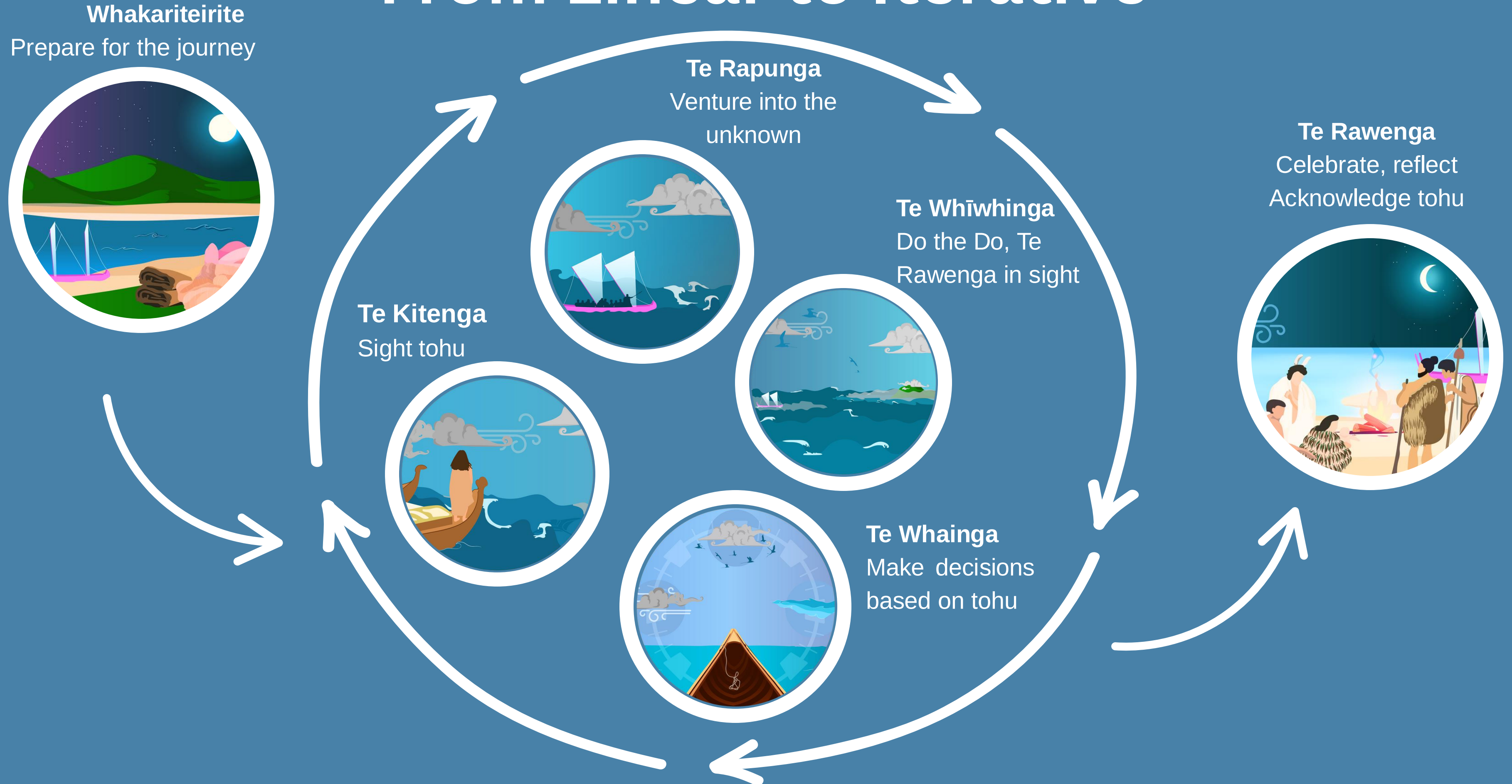
Te Rawenga | Celebrate, reflect, acknowledge

- What have we achieved that we can celebrate and acknowledge?
- What will we share with others as reliable tohu (signs) and supporting evidence?
- What will we share as our learnings/findings?

From Transactional to Relational



From Linear to Iterative



From Event based to Trust based

- Indigenous people aren't going anywhere
- Trust that they'll do the right thing
- Pivot to what's needed
- Resource long-term

Use Slido for Q&A



Slido.com | #ADRC25