



Disaster Resilience is built for the community by the community

Presentation by ABCD Inc and Resilient Villages







Do Community Groups Have a Role in Bushfire Risk Reduction and Disaster Recovery?

Presenter:
Catherine
MacNamara



Funded under the joint Australian Government – NSW Government National Partnership Agreement on Disaster Risk Reduction.

There is a groundswell of views stating that Community Groups should have a role in providing advice about Bushfire Risk Reduction and Disaster Recovery.

- Coronial Enquiries
- RDOs in regional and rural New South Wales work with local community organisations
- DRRF grant guidelines
- RFS community consultation docs



“Community engagement is a critical component of emergency management and action to reduce disaster risk and strengthen resilience”
(aidr.org.au Australian Disaster Resilience Knowledge Hub)

“Community engagement is the essential process through which all stakeholders come together to reduce the risk of disaster and enhance resilience collectively”
(aidr.org.au Australian Disaster Resilience Knowledge Hub)

“Community engagement is essential for effective disaster preparedness and response efforts. Evidence shows that accounting for local knowledge, practices and contexts helps reduce disaster risks and strengthens resilience”
(Global Disaster Preparedness Centre)

After the 2019 fires, our local residents were in shock, with feelings of grief, disillusionment and anger

Residents felt abandoned by government

We decided to take ownership



Some of the challenges faced by community groups

- Need to be an Association
- Need formal policies (e.g.: privacy)
- Limited access to communications
- Reliant upon volunteers. Burnt out
- Miniscule funds
- Limited materials & equipment
- Limited access to partners



How did we overcome these challenges?

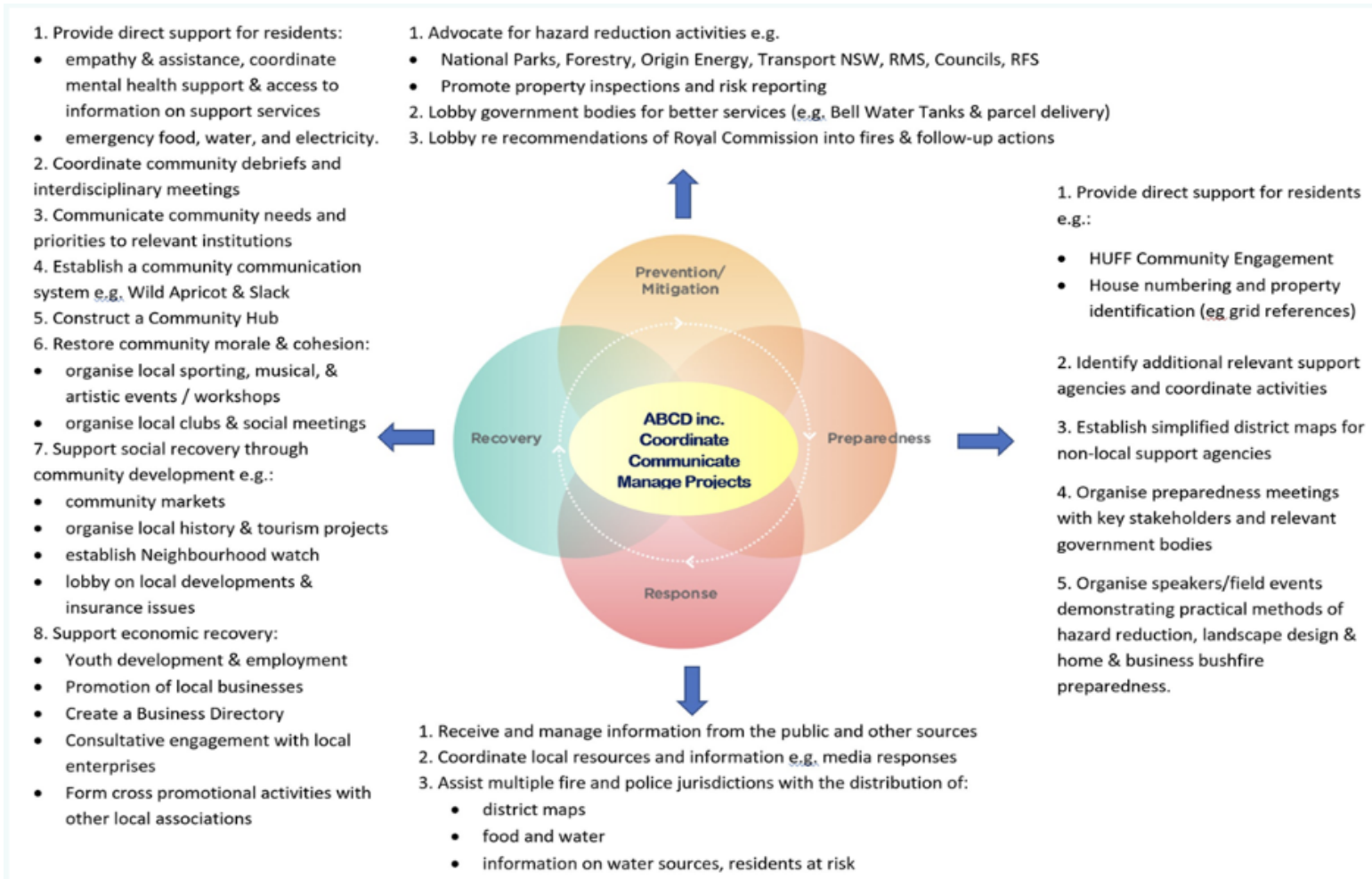
All we had was a "community needs analysis" from a post fire community meeting.

And a small group of like-minded locals who wanted to advocate for our community.



Community Needs Analysis

The scope of ABCD Inc's activities will have an immediate impact on social and economic recovery and promote resilience to deal with future bushfire events





OUR VISION

Our vision is of a strong, resilient and connected community

OUR MISSION

Through community-led, collective action, we strengthen our resilience and capacity.

OUR MOTTO

“Together We Are Stronger”

Achievements of ABCD Inc.

- A suite of Communication mechanisms
- ABCD Inc. website
- The Lyrebird Local Newsletter
- Storytelling Project
- Community Markets
- Community Events
- A Connected Community



Our residents have participated in 27 ABCD Inc. Bushfire Risk Reduction workshops!

- PCEP (Person Centred Emergency Preparedness) Vulnerability Plans
- Resilience Action Plan by the Community
- Community- based SMS Text Messaging Service
- ABCD Inc. Workshops / Videos on “How to Prepare Homes and Properties for Bushfire”
- Mosaic Burning / Pile Burning Workshops
- A new Community Hall with Recovery Hub





“One of the best uses of recovery money in terms of long-term sustainability that I’ve seen”

Susan Templeman

Federal Member for Macquarie



As you can see, there is a role for community-led groups to be involved in Bushfire Risk Reduction and Disaster Recovery.

Are government institutions, emergency services and community support agencies ready to support us?



Are government institutions, emergency services & support agencies ready for Community-led Bushfire Risk Reduction and Disaster Recovery?

Presenter:

Karen Cody

Vice-President ABCD Inc



Australian Government



resilient villages
by the community for the community

Funded under the joint Australian Government – NSW Government National Partnership Agreement on Disaster Risk Reduction. Although funding for this product has been provided by both the Australian and NSW Governments, the material contained herein does not necessarily represent the views of either Government.

- 1. Formalise the role of community associations and resource them**
- 2. Provide a range of community-led intervention models for communities to access**
- 3. Ensure transparency / availability of the information needed for community-led bushfire/emergency management planning**

4. **Commit to “best practice” Community Protection plans (CPP)** – particularly in bushfire impacted communities! They should identify:
 - a schedule of hazard reductions
 - the location of Neighbourhood Safer Places (NSP) and
 - the location and management plans for important fire trails
5. **Ensure institutional accountability and facilitate feedback**
6. **Review the volume and interaction of legislation impacting on the capacity of forest communities to reduce their bushfire risk.**

The Major Players in Bushfire Risk Reduction

Biophysical Conditions:
scale,
slope,
aspect,
vegetation
type,
weather,
climate
change, fire
history

Economic
Conditions:
National,
State, LGA

Social Services & Communications

Health
Education
LCC/BMCC
NGO's

Telstra /Optus
NBN

Residents

Social connections

Demographics: Age, Health, Income

Communications

Fire Literacy

Biodiversity values

Level of risk acceptance

Volunteerism

Other Major Landmanagers

NPWS, State Forests

Crown: Dargans Ck
Reserve Trust

Transport for NSW:
Rail, Road (RMS)

Origin Energy

Mining

Planning Authorities

LCC/BMCC: Environmental
Planning and Assessment
Act 1979 No 203

RFS: Planning for Bushfire
Protection

State Environmental
Planning Policy (Exempt and
Complying Development
Codes) 2008

Insurance Providers?

Agencies Administering Native Vegetation Legislation

Local Land Service Act
Biodiversity Conservation Act
Environmental Planning &
Assessment Act 1979 No 203
Rural Fires Act-10/50, 25m bdry
Water Management Act - Riparian
Soil Conservation Act
Council: Local Environment Plan
Development Control Plan
Tree Preservation Orders

Fire & Emergency Authorities

Emergency Responders
Police

Fire & Rescue NSW

RFS Local Brigades

RFS Out of Area Brigades

RFS Fire Control:

Community Protection Plans

Sec 66 Bushfire Hazard

Reduction Notice

Sec 44 Coordination of

Bushfire Fighting

7. Ensure the NSW Disaster Adaptation Plan (DAP) is able to address institutional barriers:

- the unique scale of the hazard should be reflected in the scale of the plan and the type of community representation
- the DAP is able to influence the policies/priorities/activities of the Local Emergency Management Committees and Bush Fire Management Committees.

NSW Reconstruction Authority

NSW Disaster Adaptation Plan Guidelines

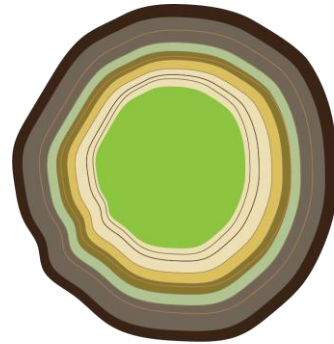
Draft for consultation

July 2024



Resilient Villages – an overview

Anne Crestani, Project Lead



 **resilient villages**
by the community for the community

“All phases of emergency management must be built on principals of deep democracy, participatory decision making, and self-governance.” (NAACP)

NAACP cited in : Jerolleman, A (December 2019), Disaster Justice for All: The Need for more Equitable and Just Recovery Lens, Natural Hazards Centre, University of Colorado, Boulder.

The Four Principles for Just Recovery

- Requires the ability to exercise agency
- Begins with equality
- Harnesses community capacity
- Requires equal access

Reference: Jerolleman, A (December 2019), Disaster Justice for All: The Need for more Equitable and Just Recovery Lens, Natural Hazards Centre, University of Colorado, Boulder.

A Just Disaster Resilience Framework

- **Works towards building and maintaining essential community infrastructure.**
- **Communities have timely access to flexible, non-competitive and long-term disaster resilience funding.**
- **Facilitates community participation in local resource allocation decisions.**
- **Grants programs are designed with community capacity and accessibility in mind.**
- **Community representatives have meaningful input in how emergencies are managed in their locality.**
- **Resourcing the disaster response efforts of community-based organisations already serving communities facing injustice and disadvantage.**
- **Community have permanent representation on Local Emergency Management Committees.**

REFERENCE: THE EMERGING IMPERATIVE OF DISASTER JUSTICE Peer reviewed research proceedings from the Bushfire and Natural Hazards CRC & AFAC conference Perth, 5 – 8 September 2018 Dr Anna Lukasiewicz & Emeritus Professor Stephen Dovers the Fenner School of Environment and Society, Australian National University

Thank you for listening



<https://abcdinc.org.au>



<https://resilientvillages.au>